



Quarter and Annual Report

Cooperative Agreement No:
620-A-00-03-00144-00 Section B

Author(s):
A.G.O. Dixon and G. Tarawali

Project Title:
Cassava Enterprise Development Project (CEDP)

Recipient:
International Institute of Tropical Agriculture (IITA)

USAID CTO:
Nduku Okaro, Agricultural Development Officer (SO 12)

Reporting Period:
July – September 2008
October 2007 – September 2008

Date: November 2008

Cassava Enterprise Development Project

July to September 2008 Quarterly Progress Report

&

Annual Progress Report (October 2007 – September 2008)

<i>Activity Summary</i>
Implementing Partner: International Institute of Tropical Agriculture (IITA)
Activity Name: Cassava Enterprise Development Project (CEDP)
Activity Objective <ol style="list-style-type: none">1. Reduce the impact of the cassava mosaic disease in selected communities2. Increase the productivity of cassava, and3. Develop and expand postharvest processing and marketing outlets for cassava products in the South-South and South East States of Nigeria
USAID/Nigeria SO 12: Improved Livelihoods in Selected Areas
Life of Activity: Five (5) Years
Total Estimated Contract/Agreement Amount: US\$ 2,917,353
Obligations to Date: US\$ 2,539,540 (as at June 2008)
Accrued Expenditure this Quarter: US\$ 66,936
Activity Cumulative Accrued Expenditure to Date: US\$ 2,606,476
Estimated Expenditure Next Quarter: US\$51,781

**Cassava Enterprise Development Project
Targets for 2007/2008**

Indicators	This Year Target	This Year Actual	This Quarter Target	This Quarter Actual	Explanation for Variance or why not reported this quarter
Strategic Objective (SO) 12: Improved Livelihoods in Selected Areas					
Indicator 1a: Income from selected commodities and products	\$13,414,812 (₦ 1,582,947,829)	\$5,372,997.6 (₦ 634,013,716.8)	\$3,157,475.72 (₦ 372,582,134.96)	\$1,795,991.15 (₦ 211,926,955.79)	Project activities reduced due to funding shortfall caused by delay in release of fund from donor (SPDC) & high inflation rate.
Indicator 1b: Income from selected services	-	\$89,243.97 (₦ 10,530,788.2)	-	\$30,001.93 (₦ 3,540,227.22)	Derived from the mobile grater enterprises. Direct income is made by operators.
Indicator 1c: Income from indirect services	-	\$4,367,577.23 ₦ 515,374,113.6	-	\$1,930,357.35 ₦ 227,782,167.8	This is income generated by indirect clients who patronised the processing centers.
Total Income (a+b+c)		\$9,829,818.80 or (₦ 1,159,918,618)		\$3,756,350.43 or (₦ 443,249,350.7)	This is the net income generated by all the enterprises for the quarter. The target for the quarter was exceeded by 18.9%.
IR12.1: Increased Market-Driven Employment Opportunities					
IR 12.1.1: Job Creation	2472	11,847	990	4539	Some enterprises especially the SMEs such as Vessa Foods expanded their production and that involved more hands. Some farm activities hired more hands and above all data collection was intensified during the quarter.
IR12.2: Increased Agricultural Productivity and Marketing					
IR 12.2.1: Sales of agricultural commodities/products	\$13,414,812. (₦ 1,582,947,829)	\$8,575,743.78 (₦ 978,583,979.8)	\$7,314,215.33 (₦ 863,077,409.15)	\$2,155,538.49 (₦ 254,353,542)	Decline is caused by shortfall in funds
IR 12.2.1b: Sales from selected services		\$91,090.94 (₦ 10,748,730.92)		\$33,335.47 (₦ 3,933,585.8)	Total service charge for grating with mobile graters.
IR 12.2.1c: Sales from indirect service users		\$6,040,503.35 ₦ 712,779,417		\$2,168,940.85 or ₦ 255,935,020)	Non-members of CEDP use these facilities to process and sell.
Total Sales (a+b+c)		\$14,707,338.07 (₦ 1,735,465,892.26)		\$4,357,814.81 (₦ 514,222,147.58)	The total sales generated in all the enterprises for the quarter (direct and indirect) exceeded target.
IR 12.2.2: Area under sustainable management (ha)	771	979.6	247	383	Target exceeded from plantings made in Bayelsa, Delta, Anambra, Enugu and

					Ebonyi States.
IR 12.2.3: Productivity of selected commodities/products	Nil – overall target of 25t/ha already met.	-	Nil	25.6t/ha	The project overall target (24t/ha) has been exceeded due to the use of improved varieties and management practices by CEDP farmers. This will be verified further in the FY 08 harvest.
IR 12.2.4: Clients adopting improved technologies	74,633	87,898	35,816	22,661	Target for the Quarter not met for same reason of short-fall in funds but yearly target was achieved. Note that subsequently we intend to get beneficiaries of our stems, who make sales from their multiplication plots to record number of persons who bought their stems for this purpose.
IR 12.2.5: Number of Technologies introduced	12	12	12	27	Target met. Many more technologies were introduced as the project grew by the year.
IR 12.3: Increased Commercial viability of micro, small, and medium enterprises					
IR12.3.3: Enterprises benefiting from Business Development Services (BDS)	349	2663	88	100	An improved data tracking method has been adopted in this service. Unlike in the past, all consultations and visits for advice on cassava enterprise development and management were captured in addition to the Peer Learning Workshops).
IR12.3.4: Sustainable Producer Associations	175	88	15	3	Over 200 associations exist at different levels of sustainability. Efforts are being made to ensure that the existing groups & associations meet the criteria for classification as sustainable. New ones will come on board in the next quarter

Exchange Rate: USD1.00 = ₦ 118

Cassava Enterprise Development Project

July to September 2008 Quarterly Progress Report and Annual Progress Report (October 2007 – September 2008)

I. Background

The Cassava Enterprise Development Project is implemented through the International Institute of Tropical Agriculture in support of Nigeria's Presidential Cassava Initiative. Total anticipated funds of US\$11.5 million are provided under a Public-Private Partnership (PPP) between the USAID and the Shell Petroleum Development Company (SPDC) to support the development of the cassava sector over a period of five (5) years.

Objective

The objective of the Project is to increase economic opportunities through sustainable and competitive cassava production, marketing and agro-enterprise development in selected communities of the South-South and South-East States of Nigeria through:

- i. Reduction of the impact of the cassava mosaic disease (CMD) in selected communities in the South-South and South East-States,
- ii. Increased productivity of cassava, and
- iii. Development and expansion of postharvest processing and marketing outlets for cassava products.

The Project's activities contribute to Strategic Objective 12 that emphasises Improved Livelihoods in Selected Areas with the following key intermediate results (IR):

1. Increased Market-Driven Employment Opportunities,
2. Increased Agricultural Productivity and Marketing, and
3. Increased Commercial Viability of micro, small, and medium enterprises (MSMEs).

II. Progress

This report is an annual/quarterly report covering activities on the project activities from July to September 2008 and the last three quarters (October 2007 to June 2008). These activities include among others:

- ◆ Income from selected commodities and products
- ◆ Job creation
- ◆ Sales of agricultural commodities/products
- ◆ Area under sustainable management
- ◆ Clients adopting improved technologies
- ◆ Hectares of primary, secondary, and tertiary improved cassava planting material established
- ◆ Sustainable Producer Associations, and
- ◆ Enterprises benefiting from Business Development Services

Table 1: Processing Centers/Enterprises by State.

State	SME	MPC	MGE	AC	Total
Abia	6	13	20	1	40
Akwa Ibom	4	18	20	1	43
Anambra	3	6	19	3	31
Bayelsa	1	20	20	15	56
Cross River	4	12	9	-	25
Delta	6	15	20	9	50
Ebonyi	-	6	16	-	22
Edo	7	33	20	11	71
Enugu	2	6	19	2	29
Imo	-	9	-	-	9
Rivers	2	11	22	2	37
Total	35	149	185	44	413

SME = Small Medium Enterprises

MPC = Microprocessing Centers

MGE = Mobile Grater Enterprises

AC = Assisted Centers

For the fiscal year 2008 (FY08), the unprecedented and unforeseen inflation had a strangling grip on our funds as it affected our burn rate. Again, the funds from SPDC (co-funder of CEDP) were paid piecemeal and are perpetually late. This seriously affected project planning and implementation in FY07/08 fiscal year. SPDC paid for Milestone 7 only in August 2008. Plans to reactivate, commission and make functional more enterprises, particularly the Small-Medium Enterprises (SMEs) which generate huge totals of employment and income were put on hold. This had a negative effect on meeting

our targets especially on Income Generation. Activities were minimized and staff strength seriously reduced, leading to under-reporting in some cases.

However, one new enterprise (MPC) came into operation in the year. This is in Delta State (Cross Victory Industries, Abraka, Ethiope East) thus increasing the number in the State from 49 to 50 and the overall to 413.

SO12 Indicator 1: Income from selected commodities and products

Table 2a: Income (₦) from all cassava enterprises and services

State	SME	MPC	MG	AC	Fresh Roots	Cassava Stems	Total Income
Abia	740,146.00	462,884.55	172,395.00	-	4,880,128.00	-	6,255,553.55
Akwa Ibom	980,320.00	504,954.85	626,463.00	-	44,129,049.60	-	46,240,787.45
Anambra	-	485,823.41	9,288.00	-	14,840,000.00	294,262.50	15,629,373.91
Bayelsa	-	721,353.90	1,209,068.82	1,179,606.00	14,755,200.00	243,200.00	18,108,428.72
Cross River	60,332,368.80	120,294.18	110,636.10	-	-	-	60,563,299.08
Delta	3,230,040.00	1,592,690.60	447,651.00	749,647.00	15,900,000.00	311,125.00	22,231,153.60
Ebonyi	-	38,399.94	11,043.00	-	2,146,500.00	181,212.50	2,377,155.44
Edo	13,015,200.00	3,404,250.00	586,800.00	582,727.50	7,773,151.20	-	25,362,128.70
Enugu	567,600.00	23,807.50	35,145.00	79,210.00	16,695,000.00	234,412.50	17,635,175.00
Imo	-	40,788.70	-	-	-	-	40,788.70
Rivers	479,600.00	91,047.00	331,737.30	120,954.56	-	-	1,023,338.86
Total Income	79,345,274.80	7,486,294.63	3,540,227.22	2,712,145.06	121,119,028.80	1,264,212.50	215,467,183.01

Table 2b: Net Income (₦) generated by and accruing directly to various cassava enterprises in the States

State	SME	MPC	AC	Fresh Roots	Cassava Stems	Total Income
Abia	740,146.00	462,884.55	-	4,880,128.00	-	6,083,158.55
Akwa Ibom	980,320.00	504,954.85	-	44,129,049.60	-	45,614,324.45
Anambra	-	485,823.41	-	14,840,000.00	294,262.50	15,620,085.91
Bayelsa	-	721,353.90	1,179,606.00	14,755,200.00	243,200.00	16,899,359.90
Cross River	60,332,368.80	120,294.18	-	-	-	60,452,662.98
Delta	3,230,040.00	1,592,690.60	749,647.00	15,900,000.00	311,125.00	21,783,502.60
Ebonyi	-	38,399.94	-	2,146,500.00	181,212.50	2,366,112.44
Edo	13,015,200.00	3,404,250.00	582,727.50	7,773,151.20	-	24,775,328.70
Enugu	567,600.00	23,807.50	79,210.00	16,695,000.00	234,412.50	17,600,030.00
Imo	-	40,788.70	-	-	-	40,788.70
Rivers	479,600.00	91,047.00	120,954.56	-	-	691,601.56
Total Income	79,345,274.80	7,486,294.63	2,712,145.06	121,119,028.80	1,264,212.50	211,926,955.79

Table 2c: Net Income and Sales (₦) generated by mobile graters enterprise services

State	Sales	Income
Abia	191,550.00	172,395.00
Akwa Ibom	696,070.00	626,463.00
Anambra	10,320.00	9,288.00
Bayelsa	1,343,409.80	1,209,068.82
Cross River	122,929.00	110,636.10
Delta	497,390.00	447,651.00
Ebonyi	12,270.00	11,043.00
Edo	652,000.00	586,800.00
Enugu	39,050.00	35,145.00
Rivers	368,597.00	331,737.30
Total Income	3,933,585.80	3,540,227.22

Some of the groups that benefited from our improved CMD resistant cassava varieties commenced harvesting in the quarter. Harvest is as usual, in piece meal. Working on the premise that these varieties yield, on average, 25.6t /ha, and that 1 tonne of cassava fresh root sells for between ₦7500 and ₦8000, their income from this enterprise is here calculated based on the number of hectares established.

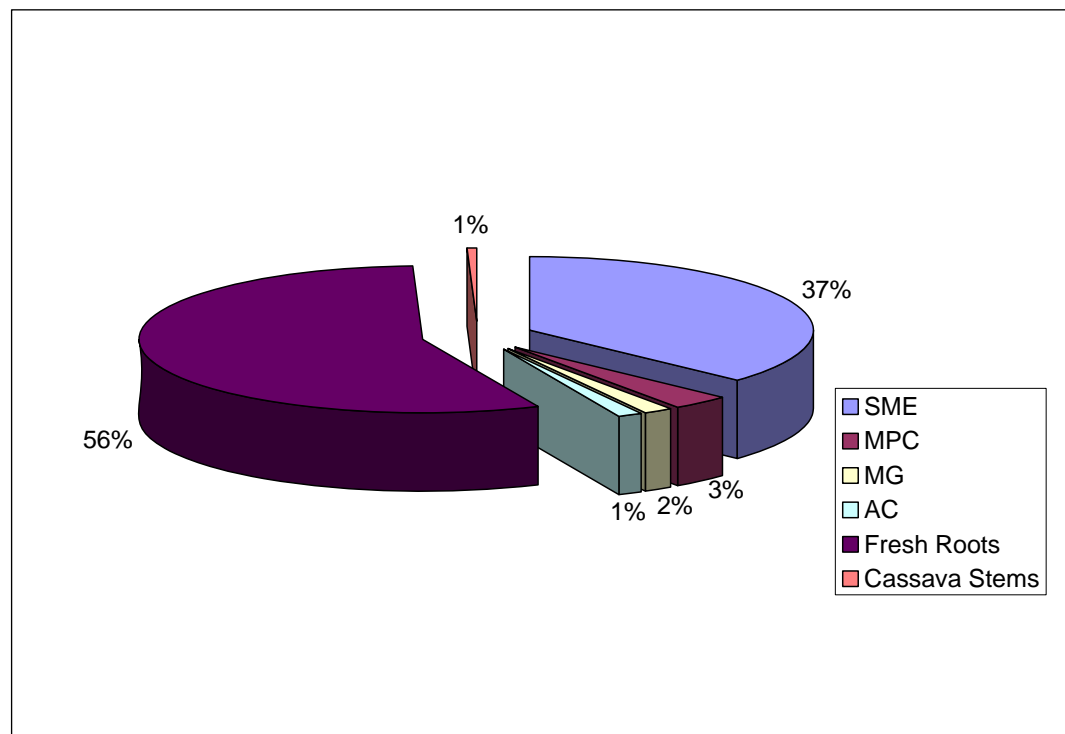


Figure 1: Percentage contribution of enterprises to gross income for the quarter, July-September, 2008.

Cassava fresh roots generated the highest proportion (56%) of income for the quarter. This was followed by the Small-Medium Enterprises (SME) with 37%. When the contributions of the SME is weighed against the exclusion of the values from fresh roots (CR) and cassava stems (CS) income, it contributed about 85% in the quarter. This is a drop of about 4% from the last quarter though with an increased income from (₦67,059,472 to ₦90,165,085). The Mobile Graters (MG) and Cassava Stem (CS) enterprises generated income to the tune of ₦4,604,627.22 (₦3,540,227.22 + ₦1,064,600) or US\$39,023.96

Total Gross Margin for various Cassava Enterprises

Based on the results of a survey, variable costs account for about 11% in MPCs and ACs, 12% for SMEs, 10% for MGEs, 20% for cassava roots, and 5% for cassava stem. These estimates will need to be reviewed owing to current changes in prices. The Total Gross Margin from CEDP- assisted cassava enterprises for this quarter is calculated by subtracting the percentage variable cost¹ from the total income. Therefore, the Total Gross Margin from all CEDP- assisted centers and farms is ₦215,473,183.01 or \$1,826,043.92, i.e., (₦258,287,127.8 less ₦42,813,944.79):

The total variable cost component is calculated as follows:

1. MPCs and ACs = $0.11 \times (\text{₦}8,411,567 + 3,047,354) = \text{₦}1,260,481.31$
2. SMEs = $0.12 \times \text{₦}90,165,085 = \text{₦}10,813,810.2$
3. MGEs = $0.10 \times \text{₦}3,933,585.8 = \text{₦}393,358.58$
4. CR = $0.2 \times \text{₦}151,398,786 = \text{₦}30,279,757.2$
5. CS = $0.05 \times \text{₦}1,330,750 = \text{₦}66,537.5$

Thus the total variable cost amounts to ₦42,813,944.79 or US\$362,830.04

¹ A survey of 25 MPCs shows that variable costs account for about 11% of total cost; for SME, 12% is the factor based on the total variable cost ratio from Widows' Mite enterprise only.

IR 12.1: Increased Market-Driven Employment Opportunities

IR 12.1.1: Job Creation

Table 3: Number of persons employed in each cassava enterprise July - September 2008

State	Total	M	F	Others (Youth and Casuals)
Mobile Grater Enterprises				
Abia	39	30	4	5
Akwa Ibom	173	104	69	0
Anambra	6	3	3	0
Bayelsa	441	42	69	330
Cross River	81	59	22	0
Delta	60	45	15	0
Ebonyi	135	45	45	45
Edo	132	83	49	0
Enugu	7	4	3	0
Rivers	80	58	10	12
Subtotal	1154	473	289	392
Micro- Processing Centers				
Abia	40	34	6	0
Akwa Ibom	143	100	43	0
Anambra	276	135	83	58
Bayelsa	300	84	75	141
Cross River	87	72	15	0
Delta	241	97	126	18
Edo	348	133	126	89
Enugu	9	9	0	0
Imo	24	9	10	5
Rivers	42	19	21	2
Sub total	1510	692	505	313
Small/ Medium-scale Enterprises				
Abia	335	195	45	95
Akwa Ibom	63	40	23	0
Bayelsa	0	0	0	0
Cross River	201	96	105	0
Delta	18	18	0	0
Edo	1240	303	297	640
Rivers	34	18	12	4
Subtotal	1918	676	488	754
Grand Total	4582	1841	1282	1459

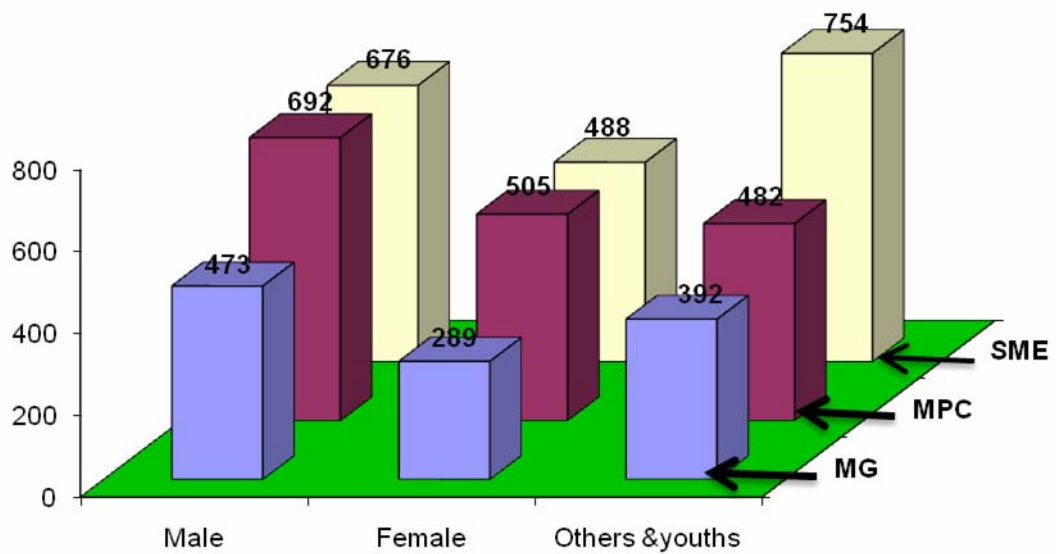


Figure 2: Employment pattern across enterprises

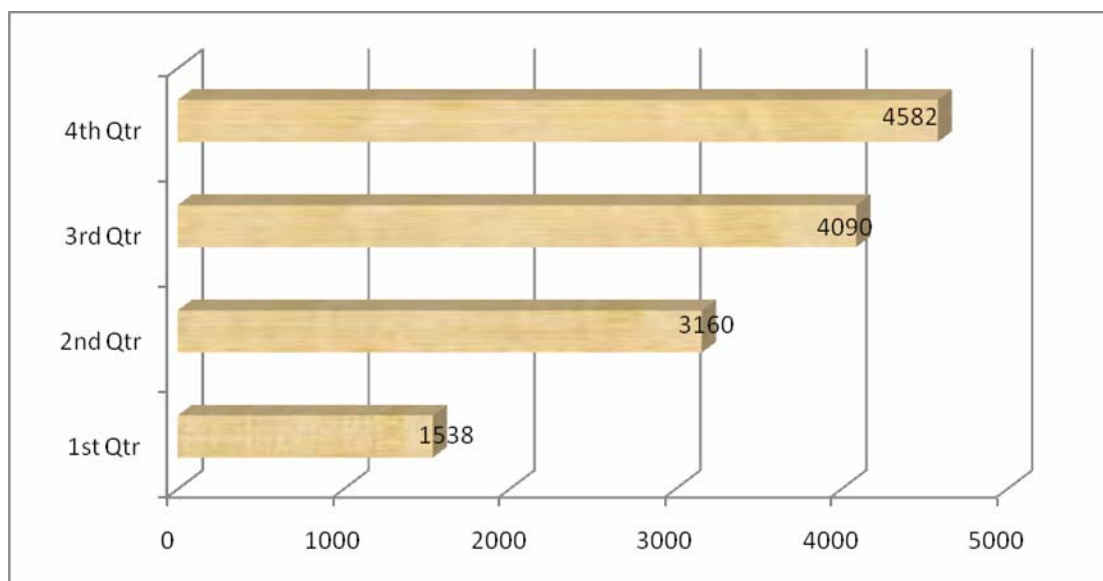
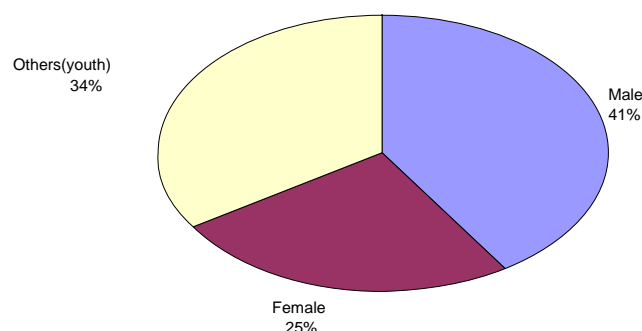


Figure 3: Distribution of employment across quarters – FY08

In the current quarter, a total of 4582 persons were employed for various activities in various enterprises expressing a 12.02% increase over the last quarter (4090 - 4582), with males dominating (42%) when segregated by gender. The dominance by men could be attributed to the nature of the activities prominent in the period which demand higher energy and strength vis-à-vis harvesting and other activities. As from next quarter, the youth will be disaggregated by gender in line with the recommendation of MEMS Data

Quality Assessment (DQA). Pertinently, the SMEs still dominate in job creation amongst the cassava enterprises.

The trend is absolutely normal as activities increase from the first quarter (dry season) and hit the peak in the wet season.



IR 12.2: Increased Agricultural Productivity and Marketing

IR 12.2.1: Sales of agricultural commodities/products

Table 4a. Sales (₦) from agricultural commodities/products from enterprises functional in the last quarter

State	SME	MPC	AC	Fresh root	Cassava Stems	Total Income
Abia	841,075.00	520,095.00	-	6,100,160.00	-	7,461,330
Akwa Ibom	1,114,000.00	567,365.00	-	55,161,312.00	-	56,842,677
Anambra	-	545,869.00	-	18,550,000.00	309,750.00	19,405,619
Bayelsa	-	810,510.00	1,325,400.00	18,444,000.00	256,000.00	20,835,910
Cross River	68,559,510.00	135,162.00	-	-	-	68,694,672
Delta	3,670,500.00	1,789,540.00	842,300.00	19,875,000.00	327,500.00	26,504,840
Ebonyi	-	43,146.00	-	2,683,125.00	190,750.00	2,917,021
Edo	14,790,000.00	3,825,000.00	654,750.00	9,716,439.00	-	28,986,189
Enugu	645,000.00	26,750.00	89,000.00	20,868,750.00	246,750.00	21,876,250
Imo	-	45,830.00	-	-	-	45,830
Rivers	545,000.00	102,300.00	135,904.00	-	-	783,204
Total Income	90,165,085	8,411,567	3,047,354	151,398,786	1,330,750	254,353,542

A total of ₦254,353,542 or US\$2,155,538.49 was realized from sales through SMEs, MPCs, ACs, and farm products (Table 4a). It is exciting to note that many beneficiaries

of CMD improved stems are selling to other farmers and making some good money from these stems. A bundle sells for between ₦350 and ₦400. See success story on page 25.

The cassava mash is grated for persons who are not members of CEDP-assisted enterprises and amounted to 1798.6t from MGEs. Thirty percent of total cassava mash output was estimated to belong to non-members (539.6t). The wet output processed by these enterprises for their clients will be converted to other produce, basically *gari* and *fufu*. These products are either consumed at home by various clients or sold in the market. Whichever way, either expenditure is saved or income generated for these clients. For this quarter, ₦255,935,020 or US\$2,168,942.7 was estimated as gross sales (Table 4b). The impact and benefit of the Project's enterprises are being greatly enjoyed by non-direct partners along the value addition chain. An assessment of spillover is scheduled to be carried out later in the year. Income for this quarter using a variable cost of 11% is ₦227,782,167.8 or US\$1,930,357.35.

Table 4b. Sales (₦) from outputs (tons) from service enterprises (indirect) functional in the last quarter

State	Wet cassava mash		Total output (t)	Estimated output (t)		Estimated sales (₦)	
	(t) MG	MPC		<i>Gari</i>	<i>Fufu</i>	<i>Gari</i>	<i>Fufu</i>
Abia	126.41	266.55	392.96	58.944	343.84	2,829,312.0	24,068,800.00
Akwa Ibom	22.70	17.26	39.96	5.994	34.965	287,712.0	2,447,550.00
Anambra	11.8	26.45	38.25	5.7375	33.46875	275,400.0	2,342,812.50
Bayelsa	500	260	760	114	665	5,472,000.0	46,550,000.00
Edo	521.6	581.33	1102.93	165.4395	965.0638	7,941,096.0	67,554,462.50
Rivers	368.60	238.2	606.8	91.02	530.95	4,368,960.0	37,166,500.00
Enugu	30.02	11.9	41.92	6.288	36.68	301,824.0	2,567,600.00
Ebonyi	0.26	4.60	4.86	0.729	4.2525	34,992.0	297,675.00
Imo	4.45	2.22	6.67	1.0005	5.83625	48,024.0	408,537.50
Delta	142.55	418.41	560.96	84.144	490.84	4,038,912.0	34,358,800.00
Cross River	70.24	113.46	183.7	27.555	160.7375	1,322,640.0	11,251,625.00
Total	1798.63	1940.38	3739.01	560.8515	3271.634	26,920,920.0	229,014,100.00
Total sales: (Gari+Fufu)						₦255,935,020.00 or \$2,168,942.7	

Methodology/calculation of the indirect sales

While the MGEs and the MPCs produce mainly produce wet output (cassava mash), the SMEs product dry output (cassava flour). The wet output processed by the enterprises for their clients will be converted to other produce, basically *gari* and *fufu*.

Factors considered in the calculations:

Gari

4k of cassava mash (wet output) yield 1k of *gari*

25k of *gari*, on average, sells for ₦1, 200, i.e., ₦48, 000/tonne

Fufu

1kg of cassava mash (wet output) yields 3.5 sizeable wraps of *fufu* (local)

1 wrap of *fufu*, on average, sells for ₦20.00, i.e., 1 tonne of cassava mash will yield ₦70,000.

A survey with the clients and MGE and MPC operators revealed that 60% of the mash goes to *gari* and 25% to *fufu*, while 15% goes to minor products.

In the 4th quarter, the MGEs and the MPCs collectively generated 3739.01t of cassava mash as output. Working on the premise of 60% for *gari* and 25% for *fufu*, it then means that 2,243.41t would have gone to *gari*, 947.75t to *fufu*, and about 547.85t to other uses.

At the ratio of 4:1, it means that from 2243.41t, a yield of 560.85t of *gari* was realised and at ₦48, 000.00/t the MGEs and MPCs assisted in generating *gari* products worth **₦26,920,920.00** (₦48,000 × 560.85t). For *fufu*, at 3.5 wraps from 1kg mash, 3,271.63 wraps were made from 934.75t of mash yielding a cash income of about **₦229,014,100.00**. Thus the twin enterprises– MGs and MPCs – indirectly generated products (*gari* and *fufu*) for sales worth **₦255,935,020.00 or US\$2,168,942.7**.

IR 12 .2.2: Area under sustainable management

This is the total land area farmed in targeted States, using at least one improved practice introduced by CEDP. With respect to cassava, improved practices include the use of improved CMD resistant cassava varieties, the application of fertilizer and herbicide, intercropping of cassava with melon, sweetpotato, *bambara* nut, groundnut, cowpea, soybean, *mucuna* or *pueraria* spp., rotation with other crops or fallow, strip farming, and so on. The area under sustainable management is the summation of area planted to CMD resistant varieties in the various States. This includes all distributions by CEDP to farmers, including secondary and tertiary multiplications.

Table 5: Stem distribution to groups, individuals and partners

State	No. of bundles supplied	Ha
Anambra	8125	97.5
Bayelsa	*3350	67
Delta	5000	100
Ebonyi	675	13.5
Enugu	5250	105
Total	22,400	383

*Direct distribution via Bayelsa ADP

Due to the short-fall in funds, we devised a cost saving approach to stem distribution. This included directing requests from interested farmers to previous beneficiaries of our improved varieties and also encouraging others to come to our offices and fields to pick up their stems (See last quarterly report). However, Bayelsa ADP got about 4000 bundles of stems from CEDP for distribution to farmers. About 11,000 cassava stems were exchanged for planting in July and August. This quantity is expected to have planted about 373 ha. This exceeds the target for the quarter by 51%. This is one of the project's strong points and this is evidenced by the fact that there is massive cultivation of CMD varieties all around the Niger Delta States and the requests are unlimited. Pertinently, these varieties sell like hot cakes in many markets.



CMD Improved varieties in Nworie Market, Ebonyi State. A bundle sells for ₦350-₦400

IR 12.2.3: Productivity of selected commodities/products

The yield of CMD resistant cassava varieties averaged about 25.6t/ha, (an increase of 9% in yield) over the target, while the local varieties in farmers' fields averaged about 12t/ha considering the 2007 planting season data. We intend to carry out another survey in FY08 to ascertain the stability of these varieties.

IR 12.2.4: Clients using improved technologies

Table 6: Clients using improved technologies

State	MG	MPC	SME	AC	
Abia	1816	5879	432	-	
Anambra	59	922	-	-	
Ebonyi	55	-	-	-	
Enugu	849	293	70	-	
Imo	-	49	-	-	
Bayelsa	5314	2908	-	4015	
Total	8093	10051	502	4015	22661

There was a slight shortfall of about 13.2% of clients making use of CEDP cassava processing facilities when compared with the last quarter (**35816-22661** individuals). The shortfall is attributable to the fact that data were not available in some centers. In the fiscal year performance however, we exceeded our target by 18% (74633 -87898). In general the MPC and MGs attracted the largest percentage (85%) of patronage (44% and 36% respectively). About 85% of clients using our technologies are female and youths (55% women and 30% youths) while 15% are male. This is excluding farmers that bought the improved cassava stems from our earlier beneficiaries that were not recorded.

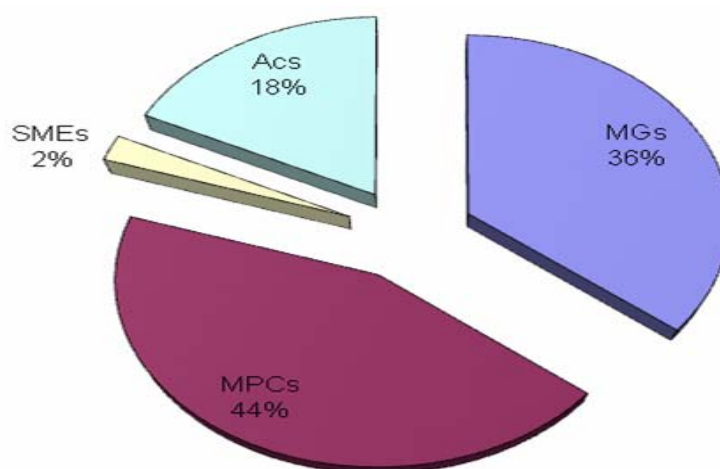


Figure 4a: Number of clients using technologies in the enterprises in 4th quarter.

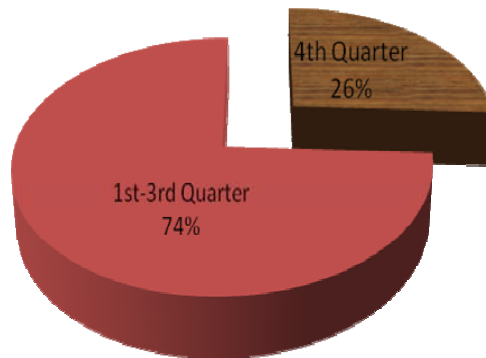


Figure 4b: Number of clients using improved technologies during the Fiscal Year - FY08

Figure 4b shows that in this fiscal year (FY08), a total of 87,898 clients were attracted to our technologies, with this quarter contributing 26%. This is above the yearly target of 74,633. The Quarterly achievement (22,661) was slightly lower than the Quarterly target (35,816). This is dominated by patronage to our processing technologies and improved cassava varieties. More people are still showing interest even at their own cost and some sacrifice of time and effort to acquire our technologies. While some replicate our technologies others pilfer them. For instance, a farmer, Mr D. Unuegbu at Achala, Awka North LGA of Anambra State, reported that his 10ha farm was so lush that people in the area started pilfering his stems. He lost about 75% of his stems to pilfering.

IR 12.2.5: Number of technologies introduced

This is a count of how many agricultural technologies have been introduced, including equipment, machinery, practise, inputs (such as seed) or methods used in the planting, cultivation, harvesting, sorting, processing/transforming, or packaging of agricultural commodities. Spread of post and preharvest technologies introduced by the Project is a continuous activity.

In the outgoing year, FY08, our technologies moved up from 12 to 27. The technologies are listed in Table 7.

Table 7: Technologies introduced in Project area.

Improved technologies	Class of technology
Automated gari fryer	Postharvest
Cabinet dryer	Postharvest
Cassava chipper	Postharvest
Cassava peeler	Postharvest
Community fryer	Postharvest
Flash dryer	Postharvest
Food recipes	Postharvest
Grater	Postharvest
Millers	Postharvest
Mobile grater	Postharvest
MPC building design	Postharvest
Packaging of finished products	Postharvest
Pressers	Postharvest
Rotary dryer	Postharvest
Sanitation of processing center	Postharvest
Sealer	Postharvest
Sifter	Postharvest
Tunnel dryer	Postharvest
Backpack grass slasher	Agronomy
Cassava harvester	Agronomy
Cassava planter	Agronomy
Cassava variety	Agronomy
Chain saw	Agronomy
Herbicide	Agronomy
Power tiller	Agronomy
Stem cutter	Agronomy
Rapid multiplication	Agronomy

IR 12.3: Increased commercial viability of micro, small, and medium enterprises**IR 12.3.1: Enterprises benefiting from Business Development Services**

Business Development Services (BDS) training includes product development, information and mobilization, advice on building construction, machinery installation, and enterprise trainings, including business advice given to processors during visits. The trainings include starting a new Cassava Business, Enterprise Management, Book and Record Keeping and Marketing, Equipment and General Factory Maintenance and Hygiene, Product Diversification and Development and Peer Learning meetings.

Only one formal training was conducted directly by CEDP as a result of the funding problem. However, some consultations were held ranging from setting up cassava enterprises to product development. These consultations include the following:

- ✚ Chima Nwakanma Okoro (08036879788) with 5 others consulted on establishment of SME or Cassava Flour packaging outfit. They visited Kaka Confectionaries (Abia) and Widow’s Mite (Akwa Ibom).
- ✚ Kenneth Ajarho (08037657990) came with a group of 4 for advice on establishing a 30ha cassava farm in Okirik.
- ✚ Five top management staff of TRANSCORP led by Dr Jide Adedeji (07034328483), the Chief Technology Officer, Transcorp Agribusiness, also consulted on the establishment of an SME and possibly an Ethanol plant.
- ✚ Mrs Chioma Ihueze (08054829349), a beneficiary of CEDP product development training trained 12 widows in Umuahia, These trainings were organised by a Faith Based Organization (FBO) known as Catholic Women Association, Umuahia.
- ✚ In Delta State, 71 students of Obasuyi College were trained on Cassava Product Development.

IR 12.3.2: Sustainable Producer Associations

CEDP currently has over 200 associations at different levels of classification for sustainability. In last quarter ,3 were identified while yet another 3 have been confirmed sustainable in this quarter.

Table 8. Sustainable Associations in Project States

State	Associations
Edo	1. Sparkling Cassava Processing Coop., Opp Agbede Market, Agbede, Etsako West LGA – 08057301431 2. Oboarelu Coop Farmers, Ekpoma Esan West LGA – 08037373380
Imo	Christain Child Care Group Umuoba Uratta, Owerri North LGA

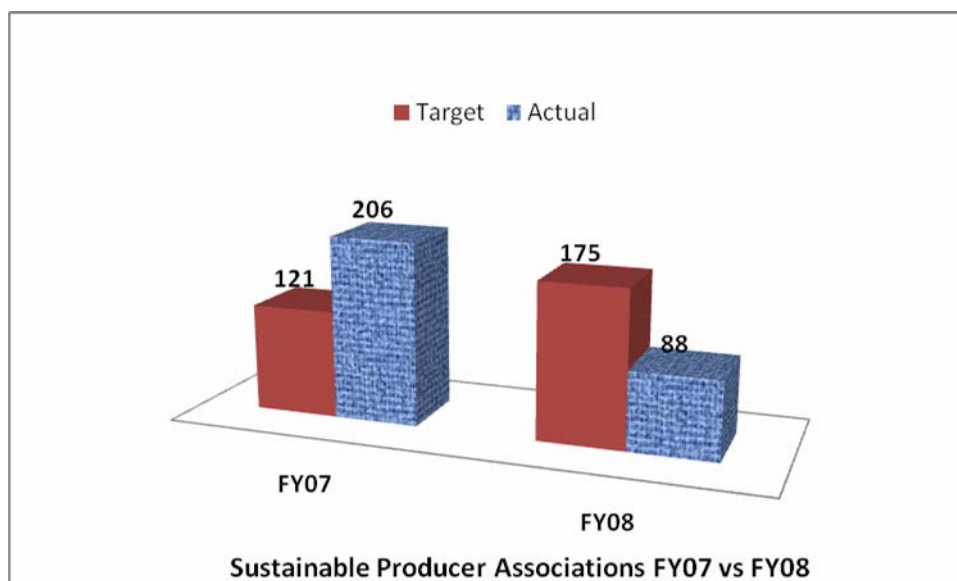


Figure 5: Comparison of performance in Sustainable Producer Associations FY07 and FY08

In the year being reported, a total of 88 sustainable groups have been certified, leaving a balance of 89 (50%). This is largely due to our funding problems as can be verified from our performance in the immediate past year (FY07). With available funds now, more of these groups and associations will be identified, organized and strengthened to meet the sustainability criteria.

III. Problems and Opportunities

For the FY08, the Project's problems have persisted. Most distressing and disturbing is the funding situation, which made most of the aspirations and targets of the Project difficult to meet. This funding crisis was basically because of the inability of SPDC and other stakeholders to pay their outstanding contributions on time.

1. Generally, the usual internal rancour in the MPCs seems to be dying down.
2. Youth restiveness, political problems, and militant disturbances still linger in parts of the Project area.
3. Poor infrastructure in the Niger Delta Region. For instance the road between Calabar and Ikom is split into 2 at exactly 30 km to Ikom from Calabar for a distance of about 325m and a depth of about 45m. The road has been in this condition for almost 8 months. The villagers had made a local bridge with wood, logs, ropes and nails. They

collect between ₦2000 and ₦4000 to allow any vehicle across this bridge.



Scary and Creepy Scenes but has not deterred our quest to achieve

4. Irregular and unreliable power supply in Project areas increases the cost of production in SMEs and some MPCs that use diesel engines.
5. The galloping rate of inflation, especially the ever-increasing prices of petroleum products, makes the cost of implementing Project activities and data collection completely outrageous. This has not improved over the two previous quarters and is having a drastic effect on our burn rate.

IV. Success Stories

IV.1a Godilogo founds Gold in *Gari*

As stated in last quarter report, *gari* has stolen the show in Godilogo Farms (Obudu). This is as a result of the windfall they got from UNICEF in the year (last quarter) to supply *gari* to refugees from Bakassi peninsula who were settled in Obudu. They make as much as ₦1, 000,000 every week from *gari* and all activities are now directed to *gari* production.

IV.1b Improved flash dryer

Some cassava entrepreneurs had before now complained that the flash dryer (a major piece of equipment in the processing of cassava) available in the country had low capacity and was not energy efficient. To tackle this problem, a 9-man flash dryer team of engineers and fabricator was selected within a short time from research institutes and the academia to design, fabricate, and install a new flash dryer for cassava flour.

Six months after its inception, the team was able to produce a more efficient and cost-effective flash dryer. Results showed the modified dryer has doubled its capacity from 250 kg/hour of dried cassava to 500 kg/hour and the flour produced is of better quality. For instance, the final product of flour has a moisture content of 4.48-6.59%, ash content of 1.42-1.48%, protein content of 0.51-0.69%. It is white and there is consistency in the particle size distribution. This achievement is a breakthrough as this flash dryer problem had almost crippled Nigeria's efforts in making the cassava industry more competitive. This good example of effective Private-Public-Partnership (PPP) was a sound initiative; it increases the projects strength and emphasises its ability to meet challenges. The dryer was commissioned on 23 August 2008 at the Godiliogo Farms. The event was



Technical Sketch of the Flash Dryer

witnessed by the following: the Acting Governor of Cross River State, Mr Frank Ada represented by Barrister Fidelis Ugbo, the Chairman of the Obanliku LGA, Dr Godwin Amaki, the Honourable Minister of RMRDC, represented by Professor A.P. Onwuola, Director General, RMRDC, the DG of IITA, represented by Dr G. Tarawali, Project Manager, CEDP and Officer-in-Charge of IITA-Onne Station, prominent scientists/researchers, notably Dr (Chief) A.G.O. Dixon of IITA and members of the press.



Dignitaries at the commissioning



CEDP Project Manager, during his speech and (right) the commissioning

IV.II:

USAID Nigeria Mission Director visits CEDP site (Ugep, Cross River State)



USAID Mission Director's Visit to Ugep, Cross River State

The new USAID Mission Director Ms Sharon L. Crome visited one of the Micro Processing Centres at Ugep, Yakur LGA, Cross River State on 3 September 2008, in addition to visiting other USAID-sponsored projects, such as Ghain, and EDPA in the State. The Ugep MPC, along the Calabar-Ikom Road, started the production of *gari* on 1

October 2007. It was built by the Ntabe Farmers Cooperative, with support from IITA through the USAID/Shell funds. The Cooperative has a membership of 25 adult farmers (15 women and 10 men).

The MPC is run as a business where members in the community bring their cassava for processing to *gari* (peeling, grating, and frying) and pay for these services. The Cooperative also pool their financial resources to buy cassava tubers which they process and sell during market days. In this way, this processing facility has touched the lives of the people in the community by its outstanding contribution towards alleviating the food security problem in the State. It has also provided income for the members of the Cooperative and created employment for 6 persons, (3 peelers, 2 operators and 1 supervisor).

During the visit to the Ugep Centre, the Mission Director was astonished at what she found. She was full of praise for the project and the group. In her words: "This is a perfect success story that I must tell Washington. I have read so many good reports of late about this Project, but I don't think it equaled my impression on this field visit. I am highly impressed that lives are being touched. I am surprised that a group could be this coherent and active. Keep up with your spirit".

The Mission Director was further impressed by the fact that two *gari* merchants came all the way from Akwa Ibom State to buy *gari* from the Ugep Centre. Talking to the Mission Director, the merchants explained that, in addition to being cheaper, *gari* from the CEDP centres is of better quality. Also the high competition for the product in Akwa Ibom (another CEDP Project State), had forced them to go to Cross River State.

This Processing Center, like the others, is really doing very well and is showing indications of sustainability. The cooperative have acquired a piece of land on a major route to the farms in the area. They intend to put up a similar processing center there to catch the farmers close to the farm gate. In addition, the demand for their product is so huge that they hardly meet all these requests from far and wide despite increasing the number of fryers. The Centre has recently bought a motor cycle for the operators to assist them in executing their activities (see below).



Ugep (Cross River State) MPC operator pose on the center's motorcycle

IV.III Happy Ladies make more money

Beneficiaries of our improved cassava stems are now making brilliant businesses out of them. They sell each bundle of these varieties for between ₦350-~~₦400~~. For instance Happy Ladies Multipurpose Cooperative Society in Ozoro, Delta State, sold to their registered members at ₦200 per bundle and ₦350 per bundle to non-members. This group



Some Executive members of Happy Ladies Multipurpose Cooperative Society in Ozoro, Delta State, chatting with the Project Manager and the Station Manager

garnered about ₦72,000 from stem sales alone. A 7 ha field was established for this group in 2005 to feed their MPC. Now they have expanded to a 15 ha sole cassava field. In addition to the cassava processing enterprises Cassava Stem Enterprises contributed to

activities that yielded income now being reported. Income from the functional enterprises that have final products (SMEs, MPCs, ACs only), reporting income in the quarter amounts to ~~₦~~258,287,127.80 or US\$2,188,813.96, This is an improvement of about 142.7% over the 3rd quarter.

IV.IV. Ex-CEDP trainees train new beneficiaries

Some private individuals and NGOs who were trained by CEDP on product development and postharvest technologies were involved in some trainings and exhibitions in Abia State (see page 19).

IV.V. Other success stories in previous Quarters

October – December 2007

- ✚ AQUADA Development Cooperation exported 11t of *Gari* flour to USA
- ✚ Odourless *fufu* flour is like gold in Canada, USA and UK
- ✚ Jon Tudy Foods exported a container load of High Quality *Gari* (2700bags of 10kg each) to USA.
- ✚ Awards to our clients in various exhibitions are limitless. In Bayelsa, Rev. Maxwell Adausi, Chief Enoch Afaria and Chief Eric Isampou got awards. In Abia, Francis Nwaogu and Monday Chigbu were all award winners, courtesy of farming/processing experiences from the project.

January – March 2008

- The Agidas MPC at Odi, Bayelsa State, received commendation and an 8 hp engine from the Federal Ministry of Agriculture and Rural Development on March 2008. This was in recognition of the good work been done by the centre.
- The Common Fund for Commodities (CFC) an inter-governmental financial institution under the European Union, lauded CEDP. On 15 April 2008, the CFC Technical Partners commissioned the extension of the CEDP model to 3 West African countries (Sierra Leone, Republic of Benin, and Nigeria).
- An MPC in Rukpoku, Rivers State, owned by Mrs Emili Emiri has metamorphosized into an SME. Mrs Emiri has made so much money from her MPC that she bought a rotary dryer and other equipment. Now she produces odourless *fufu* flour.

- CEDP in collaboration with Ekha Agro Farms Limited, Ogun State, built the largest glucose syrup factory in Africa. This has saved Nigeria \$15 million per annum on importation.
- The CEDP Project Manager, Dr G. Tarawali, was presented a merit award by the Rural Widows and Orphans Foundation inc. of Imo State on 26 January 2008. This was in recognition of his services towards empowering the rural widows and orphans in Nigeria through the supply of cassava germplasm and processing equipment.

April – June 2008

- The Okpodu SME, Cross River State, was officially handed over to the Cross River State Government and is getting ready to commence production.
- Francisca Nwaogu won 1st Prize for an Individual Farmer with IITA CMD variety-TME 419
- Elder Monday Chigbu won the 2nd Prize for an Individual Farmer with Odorless *Fufu*. Both awards were given during the Exhibition of Agricultural Products on the Occasion of the Launching of the Year 2008 Cropping Season in Abia State held on 29 June, 2008 at Umuahia South LGA Head Quarters, Apumiri, Ubakala, Umuahia, Abia State.

IV. Next quarter's tasks

Most of the activities that were penciled down for this quarter could not be held because of shortfall in funds. Depending on the availability of funds, this programme will be carried out in subsequent quarters and includes the following:

1. Recall staff recently disengaged to restore normal activities in Project States
2. Continue work in upgrading and completing unfinished Processing Centers/Facilities.
3. As a matter of urgency commission all the outstanding and completed Processing Centers especially the SMEs, so as to commence production.
4. Facilitate procurement and fabrication of postharvest equipment for MGEs, Intervention Centers, MPCs, and SMEs for partners who can afford to buy these machines.

5. Continue the multiplication and distribution of the 10 officially released CMD cassava resistant varieties in collaboration with partners in the CEDP States.
6. Conduct more on-farm trainings, especially on cassava production, processing, and enterprise development.
7. Facilitate the Cassava Stakeholders Meeting meant to disseminate CEDP results in the Project areas and beyond.
8. Step-up the publicity of CEDP activities.
9. Conduct an impact assessment study in consultation with a wide range of stakeholders.
10. Adopt an exit strategy including soliciting funds to windup CEDP activities and develop a proposal to extend CEDP to the Middle-Belt region (Benue, Kogi and Nassarawa States)

Appendices

Appendix I

Sales from various processing enterprises from July to September 2008

State	Enterprise	LGA	July	August	September
Abia	MG	Ikuwano	10,040	12,720	0
Abia	MG	Isiala Ngwa N	3770	2250	0
Abia	MG	Obingwa	25,950	34000	0
Abia	MG	Obingwa	25200	12100	0
Abia	MG	Umunneochi	2650	3940	0
Abia	MG	Isiala Ngwa South	4430	12850	0
Abia	MG	Isiukwuato	1560	4150	0
Abia	MG	Umunneochi	6090	6790	0
Abia	MG	Bende	4900	5700	0
Abia	MG	Ohafia	8580	7080	0
Abia	MG	Umuahia South	5450	4500	0
Abia	MPC	Umuahia North	5140	1090	0
Abia	MPC	Umuahia South	6500	2750	2310
Abia	MPC	Umuahia North	8760	9820	0
Abia	MPC	Osisoma	36520	28,300	7360
Abia	MPC	Isiala Ngwa North	6080	2,750	480
Abia	MPC	Umuahia South	9500	8560	0
Abia	MPC	Umuahia North	14770	40055	0
Abia	MPC	Ikwuano	8550	16050	0
Abia	MPC	Ohafia	40000	36000	0
Abia	MPC	Bende	14,600	24090	0
Abia	MPC	Arochukwu	9190	0	0
Abia	MPC	Umuahia North	31150	43505	0
Abia	SME	Arochukwu	57220	53320	22160
Abia	SME	Umuahia North	19870	19490	0
Abia	SME	Arochukwu	16,000	11,700	0
Akwa Ibom	MGs	Ika	11,150	10,520	9,720
Akwa Ibom	MGs	Ibiono	10,650	11,140	10,220
Akwa Ibom	MGs	Ikono	13,100	12,350	11,300
Akwa Ibom	MGs	Itu	12,220	10,770	8,900
Akwa Ibom	MGs	Mkpat Enin	9,110	10,100	9,300
Akwa Ibom	MGs	Ibiono	10,830	9,970	10,120
Akwa Ibom	MGs	Nsit Ubom	9,670	10,200	9,560
Akwa Ibom	MGs	Uyo	11,600	12,320	11,820
Akwa Ibom	MGs	Ini	9,400	11,350	10,800
Akwa Ibom	MGs	Nsit Atai	15,200	13,700	11,980
Akwa Ibom	MGs	Iquo Okon Masodi	11,200	10,550	8,200
Akwa Ibom	MGs	Rev. Fr. Offiong	10,600	9,600	10,150
Akwa Ibom	MGs	Elder Eka	9,160	10,200	10,600
Akwa Ibom	MGs	Nelson Akpan	13,120	13,450	12,200
Akwa Ibom	MGs	Princess Nkoyo Bassey	12,200	12,600	11,450
Akwa Ibom	MGs	Mr. Edet .A. Offiong	12,640	11,850	10,700
Akwa Ibom	MGs	Grace Etim Duncan	11,310	10,570	10,400
Akwa Ibom	MGs	Namnso Etop	14,460	14,700	13,440
Akwa Ibom	MGs	Prince Enefiok	13,800	14,200	13,800
Akwa Ibom	MGs	Eneanwan Ita	11,250	11,560	10,920
Akwa Ibom	MPCs	Nsit Ubium	14,200	13,700	13,250
Akwa Ibom	MPCs	Mkpat Enin	12,450	12,350	10,500
Akwa Ibom	MPCs	Ini	0	0	7820

Akwa Ibom	MPCs	Ibesikpo Asutan	13,100	13,550	11,780
Akwa Ibom	MPCs	Nsit Ibom	11,300	12,150	10,710
Akwa Ibom	MPCs	Uyo	10,550	11,370	12,140
Akwa Ibom	MPCs	Itu	8,920	9,800	10,200
Akwa Ibom	MPCs	Uruan	14,600	14,230	13,650
Akwa Ibom	MPCs	Okobo	16,220	15,600	14,330
Akwa Ibom	MPCs	Ukanafun	9,880	10,200	8,760
Akwa Ibom	MPCs	Eket	11,700	11,320	9,400
Akwa Ibom	MPCs	Etinan	13,350	14,100	12,950
Akwa Ibom	MPCs	Abak	10,710	11,220	12,120
Akwa Ibom	MPCs	Uyo	14,400	14,540	14,300
Akwa Ibom	MPCs	Ikot Eyo(Bore Hole)	7,400	6,100	5,600
Akwa Ibom	MPCs	Mkpat Enin	9,650	10,300	10,180
Akwa Ibom	SMEs	Abak	91,150	89,500	86,150
Akwa Ibom	SMEs	Uyo	73,000	82,150	77,600
Anambra	MG	Awka North	19600	20400	0
Anambra	MG	Njikoka	20,400	20400	0
Anambra	MG	Idemili South	20,000	19600	0
Anambra	MG	Orumba North	20,800	20,400	0
Anambra	MG	Njikoka	0	3000	0
Anambra	MG	Oyi	2500	2000	0
Anambra	MG		0	19600	0
Anambra	MPC	Ihiala	4,810	3150	0
Anambra	MPC	Orumba North	31,000	34000	0
Anambra	MPC	Orumba South	32,100	13250	0
Anambra	MPC	Idemili	9,700	10100	0
Anambra	MPC	Ihiala	4,810	3150	0
Anambra	MPC	Orumba North	31,000	34000	0
Anambra	MPC	Orumba South	32,100	13250	0
Anambra	MPC	Idemili	9,700	10100	0
Bayelsa	AC	Ogbia	10,800	13200	7400
Bayelsa	AC	Ogbia	11500	22300	12200
Bayelsa	AC	Ogbia	8900	8100	4300
Bayelsa	AC	Yenagoa	5900	6300	4500
Bayelsa	AC	Sagbama	24,800	51600	24,800
Bayelsa	AC	Sagbama	8300	8700	6800
Bayelsa	AC	Sagbama	6800	10100	7200
Bayelsa	AC	Kolokuma/Opokuma	7700	17100	6500
Bayelsa	AC	Southern Ijaw	26200	32500	28200
Bayelsa	AC	Southern Ijaw	6800	8500	4900
Bayelsa	AC	Sagbama	57000	61,900	24200
Bayelsa	AC	Sagbama	21900	11200	19000
Bayelsa	AC	Yenagoa	14,200	0	0
Bayelsa	AC	Sagbama	42,300	37200	16500
Bayelsa	AC	Yenagoa	9900	8600	4300
Bayelsa	MG	Southern Ijaw	9100	9900	5000
Bayelsa	MG	Southern Ijaw	12400	30400	15100
Bayelsa	MG	Southern Ijaw	7600	11200	4700
Bayelsa	MG	Southern Ijaw	8000	7000	6000
Bayelsa	MG	Sagbama	24,200	75200	51000
Bayelsa	MG	Sagbama	8000	7800	4300
Bayelsa	MG	Yenagoa	5600	8100	4900
Bayelsa	MG	Yenagoa	7500	7400	4500
Bayelsa	MG	Yenagoa	15300	13800	7200

Bayelsa	MG	Yenagoa	11400	9500	8700
Bayelsa	MG	Ogbia	7900	8800	6600
Bayelsa	MG	Southern Ijaw	8900	5500	7200
Bayelsa	MG	Southern Ijaw	6700	5900	5300
Bayelsa	MG	Southern Ijaw	12400	10500	8000
Bayelsa	MG	Southern Ijaw	17600	24000	14200
Bayelsa	MG	Southern Ijaw	14400	19200	11200
Bayelsa	MG	Yenagoa	9500	10100	7500
Bayelsa	MG	Yenagoa	7600	7000	4700
Bayelsa	MG	Southern Ijaw	17800	24700	12300
Bayelsa	MG	Kolokuma/Opokuma	8800	14100	7000
Bayelsa	MPC	Ogbia	39,600	53,800	26500
Bayelsa	MPC	Sagbama	27,200	26700	17,900
Bayelsa	MPC	Yenagoa	8,300	11,200	5100
Bayelsa	MPC	Yenagoa	6,400	9200	4600
Bayelsa	MPC	Ogbia	8,000	11900	9400
Bayelsa	MPC	Nembe	6,300	5200	4700
Bayelsa	MPC	Yenagoa	7,500	6300	5600
Bayelsa	MPC	Sagbama	9,600	11000	9000
Bayelsa	MPC	Ogbia	11,700	12560	7500
Bayelsa	MPC	Yenagoa	7,000	6600	8100
Bayelsa	MPC	Yenagoa	10,100	16700	9300
Bayelsa	MPC	Yenagoa	12,200	14500	8700
Bayelsa	MPC	Southern Ijaw	7,200	8500	4300
Bayelsa	MPC	Kolokuma/Opokuma	14,500	34100	17500
Cross River	MG	Biase	2,100	2700	3111
Cross River	MG	Yakurr	3,625	3,150	4,200
Cross River	MG	Abi	2,000	2000	3180
Cross River	MG	Abi	2310	2300	3,250
Cross River	MG	Abi	3600	3,350	2,540
Cross River	MG	Abi	3,510	3,200	4,100
Cross River	MG	Odukpani	5870	4819	5,000
Cross River	MG	Akamkpa	2,110	3,210	3,420
Cross River	MG	Ogoja	4,127	4,300	3,000
Cross River	MPC	Obubra	6,120	4,100.00	4,890
Cross River	MPC	Bekwara	4190	3,568.00	3,290
Cross River	MPC	Boki	2,980	3,870.00	4,111
Cross River	MPC	Boki	6,730	4,610.00	5,000
Cross River	MPC	Odukpani	3,901	3,910.00	4,100
Cross River	MPC	Ikom	2,670	4,290.00	2,580
Cross River	MPC	Boki	0	0	1,650
Cross River	MPC	0	0	0	2,109
Cross River	MPC	Yakurr	7,290	6,321	7,500
Delta	AC	Okpe	12000	20,000	18000
Delta	AC	Ughelli North	15000	20000	24,000
Delta	AC	Isoko North	6000	8500	9000
Delta	AC	Ughelli South	30000	36000	24000
Delta	AC	Ndokwa West	7500	9000	9750
Delta	AC	Oshimili South	3500	4300	3100
Delta	AC	Oshimili South	3600	4500	5000
Delta	AC	Ughelli North	6600	7000	8500
Delta	AC	Ethiope West	20000	22700	25750
Delta	AC	Ughelli South	60000	135000	150000
Delta	AC	Okpe	2050	5180	6200

Delta	AC	Ughelli North	3000	2500	2400
Delta	MG	Isoko North	1600	2100	3300
Delta	MG	Ndokwa west	5400	6200	5800
Delta	MG	Oshimili South	4200	6050	3900
Delta	MG	Ughelli North LGA	12,500	19,930	11,000
Delta	MG	Aniocha North	7500	6000	4500
Delta	MG	Aniocha South	5800	5000	6400
Delta	MG	Isoko North	3985	3290	4000
Delta	MG	Isoko South	3000	3600	4500
Delta	MG	Isoko South	2015	1930	1650
Delta	MG	Ughelli North	8250	10,000	24000
Delta	MG	Oshimili North	3900	5600	3400
Delta	MG	Isoko South	6000	6300	7500
Delta	MPC	Isoko North	19000	18000	22000
Delta	MPC	Bomadi	0	0	5000
Delta	MPC	Isoko North	5950	5540	9160
Delta	MPC	Isoko North	0	2500	4500
Delta	MPC	Sapele	112500	112,500	150000
Delta	MPC	Ethiope East	1500	2500	3000
Delta	MPC	Sapele	0	3000	3500
Delta	MPC	Ughelli North	8000	9000	8500
Delta	MPC	Ethiope West	7500	8000	8000
Delta	MPC	Ethiope East	0	31760	100440
Delta	MPC	Oshimili South	0	69000	60000
Delta	SME	Sapele	850000	425000	425000
Ebonyi	MG	Ngbo West	0	4000	0
Ebonyi	MPC	Edda East	16,000	0	0
Ebonyi	MPC	Ezzamgbo	13460	13686	0
Edo	AC	Ikpoba0Okha	12500	13000	12750
Edo	AC	Orhionmwon	10000	15000	18000
Edo	AC	Orhionmmwon	15000	15750	16500
Edo	AC	Evbonogbon Camp 34 community(NCF)	15000	14850	14500
Edo	AC	Umoghun0Zuagbor	19450	19000	19750
Edo	AC	Ughoton community(NCF)	10000	11000	11500
Edo	AC	Ekewan community(NCF)	15100	15600	15900
Edo	AC	Owan0East	10000	10500	11000
Edo	AC	Etsako0East	11750	12000	11500
Edo	AC	Etsako central	11200	8500	13000
Edo	AC	Esan South0East	15000	14500	15550
Edo	AC	Esan South0East	1000	1250	1500
Edo	AC	Igueben	15400	16400	15900
Edo	AC	Egor	15350	15850	16100
Edo	AC	Oredo	17000	17250	18000
Edo	MG	Etsako West	30000	20000	25000
Edo	MG	Etsako West	15000	20000	28000
Edo	MG	Etsako West	18000	24000	22000
Edo	MG	Owan East	20000	15000	22000
Edo	MG	Etsako West	20000	23,000	21000
Edo	MG	Etsako West	23000	15000	17000
Edo	MG	Ughoton community (NCF)	13250	13000	12750
Edo	MG	Ekewan community (NCF)	5900	6000	6400
Edo	MG	Evbonogbon Camp 34	6400	6500	6700
Edo	MG	Ogba community (NCF)	14250	14000	12850

Edo	MG	Obaszagbon0Nugu	10400	10000	10700
Edo	MG	Umoghun0Zuagbor	176200	10750	12000
Edo	MPC	ESAN WST	4750	4850	5250
Edo	MPC	Ikpoba0Okha	180000	180000	88500
Edo	MPC	Etsako Central	15000	16500	15600
Edo	MPC	Orhiomwon	90000	120000	135000
Edo	MPC	Esan West	0	0	22500
Edo	MPC	Ikpoba0Okha	45000	0	0
Edo	SME	Ikoba Okha	2,362,500	5,437,500	5,625,000
Enugu	MG	Oji River	4110	12160	0
Enugu	MG	Nsukka	0	4240	0
Enugu	MPC	Nsukka	6970	7620	0
Enugu	MPC	Enugu East	1880	3300	4430
Enugu	MPC	Enugu North	7950	11300	4530
Enugu	MPC		0	20000	14000
Enugu	SME	Nsukka	0	70000	109000
Imo	MPC	Ohaji	1200	1350	0
Imo	MPC	Ideato South	0	2110	910
Imo	MPC	Orsu	0	31280	6880
Rivers	AC	Eleme	25630	0	0
Rivers	AC	Eleme	2850	8080	5030
Rivers	AC		3000	3350	2500
Rivers	MG	Ahoda East	0	9200	7800
Rivers	MG	Etche	5050	1800	1500
Rivers	MG	Gokana	6760	8650	4890
Rivers	MG	Eleme	2535	2110	2910
Rivers	MG	Isiokpo	28000	30000	20000
Rivers	MG	Kaani 1 KHALGA	0	3340	3270
Rivers	MG	kwawa KHALGA	23980	27420	0
Rivers	MG	K0Dere	5550	2990	0
Rivers	MG	Eleme	0	0	7375
Rivers	MG	Eleme	5150	7200	4300
Rivers	MG	Etche	5445	5500	5000
Rivers	MG	Etche	0	0	6150
Rivers	MPC	Abua	15900	12000	4000

Appendix II

Number of persons employed for the quarter July – September 2008

Employment Data				July, '08			August, '08			Sept '08		
State	LGA	Community	Status	M	F	O	M	F	O	M	F	O
Abia	Ikuwano	Ariam-Alala	MG	1	0	0	1	0	0	1	0	0
Abia	Isiala Ngwa S	Mgbokonta	MG	1	0	0	1	0	0	0	0	0
Abia	Obingwa	Ossa-Ukwu	MG	1	0	1	1	2	2	1	2	2
Abia	Obingwa	Owo Ahia-afor	MG	1	0	0	1	0	0	1	0	0
Abia	Umunneochi	Obinolu, Ngodo	MG	1	0	0	1	0	0	1	0	0
Abia	Isiala Ngwa South	Amairi, Umuoba	MG	1	0	0	1	0	0	1	0	0
Abia	Isiukwuato	Umudiya, Amaeke Ovim	MG	1	0	0	1	0	0	1	0	0
Abia	Umunneochi	Umumeze Amuda, Isuochi	MG	1	0	0	1	0	0	0	0	0
Abia	Bende	Ikot Ugo-Okopedi, Itumbazo	MG	1	0	0	1	0	0	1	0	0
Abia	Ohafia	Amaekpu	MG	1	0	0	1	0	0	0	0	0
Abia	Umuahia South	Ogbodiukwu, Umuahia	MG	1	0	0	1	0	0	1	0	0
Abia	Umuahia North	Uhabiri Ossah	MPC	1	0	0	1	0	0	0	0	0
Abia	Umuahia South	Umuabali	MPC	1	0	0	1	0	0	0	0	0
Abia	Osioma	Osioma	MPC	1	0	0	1	0	0	1	0	0
Abia	Umuahia South	Ohiya	MPC	2	0	0	2	0	0	2	0	0
Abia	Umuahia North	Umukabia Umuagbom	MPC	1	0	1	1	0	1	1	0	1
Abia	Umuahia South	Umuobutu, Old Umuahia	MPC	2	0	0	2	0	0	2	0	0
Abia	Ikwano	Nchara-Oloko	MPC	2	0	0	2	0	0	2	0	0
Abia	Ohafia	Amurie, Nkporo, O	MPC	2	0	0	1	0	0	1	0	0
Abia	Bende	Okafia	MPC	2	1	0	2	1	0	2	1	0
Abia	Umuahia North	Azueke Ndume	MPC	1	0	0	1	0	0	1	0	0
Abia	Obingwa	Owo Ahia-afor	MPC	1	1	0	1	1	0	1	1	0
Abia	Umuahia South	Old Umuahia	SME	4	2	4	4	2	4	0	0	0
Abia	Arochukwu	Achara-Ihechiowa	SME	2	2	0	2	2	0	2	2	0
Abia	Umuahia North	Umuahia	SME	1	0	0	1	0	0	1	0	0
Anambra	Orumba North	Ndiloegbe-nachi, Ndiopalaeze	MG	1	1	0	1	1	0	1	1	0
Anambra	Ihiala	Okohia-Ihiala	MPC	1	1	0	1	1	0	1	1	0
Anambra	Orumba North	Umunze	MPC	0	0	0	2	1	0	0	0	0
Anambra	Orumba South	Norfijia-Umuawayi-Umueji	MPC	0	0	0	1	0	0	1	0	0
Anambra	Idemili	Obosi	MPC	1	0	0	1	0	0	0	0	0
Anambra	Oyi	Umuefi-Eziagu, Nteje	MPC	0	0	0	0	0	0	1	0	0
Anambra	Ihiala	Umuhu-Okija	MPC	1	1	0	1	1	0	0	0	0
Anambra	Ihiala	Okohia-Ihiala	MPC	21	10	12	21	10	12	18	10	6
Anambra	Orumba North	Umunze	MPC	25	20	12	18	15	12	20	12	4
Ebonyi	Abakaliki	Ebia Umuhu	MG	1	1	0	1	1	0	1	1	0
Ebonyi	Ohaukwu	Ndiegwu	MG	1	1	0	1	1	0	1	1	0
Ebonyi	Afikpo	Mgbom	MG	1	1	0	1	1	0	1	1	0
Ebonyi	Ohaozara	Ogwu Uburu	MG	1	1	0	1	1	0	1	1	0
Ebonyi	Ezza	Amanna	MG	1	1	0	1	1	0	1	1	0
Ebonyi	Ngbo West	Umuogudu Akpu	MG	1	1	0	1	1	0	1	1	0
Ebonyi	Ngbo West	Egwegwo	MG	1	1	0	1	1	0	1	1	0
Ebonyi	Ngbo West	Ndaburuebenyi	MG	1	1	0	1	1	0	1	1	0
Ebonyi	Ngbo West	Ndaburuebenyi	MG	1	1	0	1	1	0	1	1	0
Ebonyi	Ikwo	Onuebonyi	MG	1	1	0	1	1	0	1	1	0
Ebonyi	Ohaukwu	Umuebe-Amovu	MG	1	1	0	1	1	0	1	1	0
Ebonyi	Ishielu	Ezillo	MG	1	1	0	1	1	0	1	1	0
Ebonyi	Ngbo Central	Ndiagu Aleke	MG	1	1	0	1	1	0	1	1	0
Ebonyi	Ngbo East	Ngbo Court Area	MG	1	1	0	1	1	0	1	1	0
Ebonyi	Ngbo East	Ngbo Court Area	MG	1	1	0	1	1	0	1	1	0

Enugu	Uzo Uwani	Nimbo	MG	1	3	0	0	0	0	0	0	0
Enugu	Oji River	Agbaleinyi	MG	1	0	0	1	0	0	1	0	0
Enugu	Uzo-uwani	Adani	MPC	2	0	0	0	0	0	0	0	0
Enugu	Nsukka	Obimo	MPC	1	0	0	1	0	0	1	0	0
Enugu	Enugu East	Alulu Nike-Uno	MPC	1	0	0	0	0	0	0	0	0
Enugu	Enugu North	Akpuoga Nike	MPC	1	0	0	1	0	0	1	0	0
Enugu	Uzo-uwani	Adani	SME	2	2	5	2	2	5	2	2	5
		Ugochinyere Okohia Women group										
Imo	Ideato South		MPC	1	1	0	1	1	0	1	1	0
Imo	ORSU	Amaraihe Cooperative Soc.	MPC	2	3	4	0	0	0	0	0	0
A'lbom	Ika	Urua Inyang	MGs	2	1	0	2	1	0	2	1	0
A'lbom	Ibiono	Mbiabiam	MGs	1	1	0	2	1	0	2	1	0
A'lbom	Ikono	Nnung Ukim	MGs	2	1	0	2	1	0	2	1	0
A'lbom	Itu	Ekit Itam 2	MGs	2	1	0	2	1	0	2	1	0
A'lbom	Mkpat Enin	Asong	MGs	0	2	0	2	1	0	2	1	0
A'lbom	Ibiono	Afia	MGs	0	2	0	2	1	0	1	2	0
A'lbom	Nsit Ubom	Obotim	MGs	2	1	0	2	1	0	2	1	0
A'lbom	Uyo	Nnung Asang	MGs	2	1	0	2	1	0	2	1	0
A'lbom	Ini	Ibam Edet	MGs	2	1	0	2	1	0	2	1	0
A'lbom	Nsit Atai	Ndang Nsit	MGs	2	1	0	2	1	0	1	2	0
		Urue Offong-Oruko(10 lita Fe 5866)										
A'lbom	Iquo Okon Masodi Rev. Fr. Offiong		MGs	1	1	0	2	1	0	2	1	0
		Uruan(04 lita Fe 5864)										
A'lbom	Elder Eka	Uyo(02 lita Fe 5864)	MGs	2	1	0	2	1	0	1	2	0
A'lbom	Nelson Akpan Princess Nkoyo	Etinan(01 lita Fe 5859)	MGs	1	1	0	2	1	0	1	2	0
		Oron(05 lita Fe 5061)										
A'lbom	Bassey		MGs	0	2	0	2	1	0	2	1	0
A'lbom	Mr. Edet .A. Offiong	Onna(03 lita Fe 5862)	MGs	2	1	0	2	1	0	2	1	0
A'lbom	Grace Etim Duncan	Udung Uko(06 lita Fe 5867)	MGs	2	1	0	2	1	0	1	2	0
A'lbom	Namnsio Etop	Ibesikpo(07 lita Fe 5860)	MGs	2	1	0	2	1	0	2	1	0
A'lbom	Prince Enefiok	Uruan(08 lita Fe 5863)	MGs	0	2	0	2	1	0	1	2	0
A'lbom	Eneanwan Ita	Mbo(09 lita Fe 5869)	MGs	2	1	0	2	1	0	3	0	0
A'lbom	Nsit Ubium	Ikot Eyo	MPCs	2	1	0	3	0	0	2	1	0
A'lbom	Mkpat Enin	Ikot Obio Nso	MPCs	2	1	0	2	2	0	3	1	0
A'lbom	Ini	Ogu Itu	MPCs	3	1	0	3	1	0	3	1	0
A'lbom	Ibesikpo Asutan	Okop Ndua Erong	MPCs	3	1	0	2	1	0	2	2	0
A'lbom	Nsit Ibom	Afia Nsit Urua Nko	MPCs	3	0	0	1	2	0	3	0	0
A'lbom	Uyo	Nwaniba Road	MPCs	3	0	0	1	1	0	3	0	0
A'lbom	Itu	Aka Itam	MPCs	3	0	0	1	1	0	2	1	0
A'lbom	Uruan	Mbiaya	MPCs	1	1	0	2	1	0	1	2	0
A'lbom	Okobo	Okopedi	MPCs	2	1	0	2	1	0	2	1	0
A'lbom	Ukanafun	Ikot Antia Afaha Obo	MPCs	2	1	0	2	0	0	2	1	0
A'lbom	Eket	Mkpok Village	MPCs	2	0	0	2	1	0	1	2	0
A'lbom	Etinan	Awa Ntong	MPCs	2	0	0	2	1	0	2	1	0
A'lbom	Abak	Onuk Ukpom	MPCs	1	2	0	2	1	0	3	1	0
A'lbom	Uyo	Barracks Road End	MPCs	2	1	0	2	1	0	2	1	0
A'lbom	Ikot Eyo(Bore Hole)		MPCs	3	0	0	2	1	0	2	1	0
A'lbom	Mkpat Enin	Ikot Ekong	MPCs	2	0	0	2	0	0	0	2	0
A'lbom	Abak	Ikot Etukudo	SMEs	8	27	0	8	31	0	8	31	0
		#6 Phenson Street, Abak Road										
A'lbom	Uyo	Housing	SMEs	4	8	0	5	10	0	7	16	0
Bayelsa	Ogbia	Emeyal II	AC	3	10	7	3	10	7	3	10	7
Bayelsa	Ogbia	Yiba-ama	AC	2	0	1	2	0	1	2	0	1
Bayelsa	Ogbia	Otuasega	AC	1	0	1	1	0	1	1	0	1
Bayelsa	Ogbia	Emeyal 11	AC	1	0	0	1	0	0	1	0	0

Bayelsa	Yenagoa	Ogu	AC	1	0	0	1	0	0	1	0	0
Bayelsa	Sagbama	Isoni	AC	2	0	2	2	0	2	2	0	2
Bayelsa	Sagbama	Ebedebiri	AC	1	0	0	1	0	0	1	0	0
Bayelsa	Sagbama	Toru-orua	AC	1	0	0	1	0	0	1	0	0
Bayelsa	KolokumaOpokuma	Orubiri	AC	1	0	1	1	0	1	1	0	1
Bayelsa	Southern Ijaw	Azama	AC	1	0	0	1	0	0	1	0	0
Bayelsa	Southern Ijaw	Oporoma	AC	1	0	0	1	0	0	1	0	0
Bayelsa	Sagbama	Ossiama	AC	1	1	2	1	1	2	1	1	2
Bayelsa	Sagbama	Akkeddei	AC	1	0	1	1	0	1	1	0	1
Bayelsa	Yenagoa	Edepie	AC	1	3	1	1	3	1	1	3	1
Bayelsa	Yenagoa	Agudama	AC	0	1	0	0	1	0	0	1	0
Bayelsa	Southern Ijaw	Olugbobiri	MG	1	0	6	1	0	6	1	0	6
Bayelsa	Southern Ijaw	Kassama	MG	0	0	10	0	0	10	0	0	10
Bayelsa	Southern Ijaw	Igeibiri	MG	1	0	9	1	0	9	1	0	9
Bayelsa	Southern Ijaw	Amassoma	MG	0	0	5	0	0	5	0	0	5
Bayelsa	Sagbama	Egbopuloama	MG	4	8	25	4	8	25	4	8	25
Bayelsa	Sagbama	Odoni	MG	0	0	6	0	0	6	0	0	6
Bayelsa	Yenagoa	Akaba	MG	0	0	9	0	0	9	0	0	9
Bayelsa	Yenagoa	Yenaka	MG	0	2	8	0	2	8	0	2	8
Bayelsa	Yenagoa	Bumoundi-gbene	MG	0	8	7	0	8	7	0	8	7
Bayelsa	Yenagoa	Ikibiri	MG	2	0	8	2	0	8	2	0	8
Bayelsa	Ogbia	Epebu	MG	0	0	2	0	0	2	0	0	2
Bayelsa	Southern Ijaw	Ikebiri	MG	0	0	2	0	0	2	0	0	2
Bayelsa	Southern Ijaw	ukubie	MG	3	4	3	3	4	3	3	4	3
Bayelsa	Southern Ijaw	Angiama	MG	1	0	1	1	0	1	1	0	1
Bayelsa	Southern Ijaw	Emete	MG	0	0	2	0	0	2	0	0	2
Bayelsa	Southern Ijaw	Ekowe	MG	0	0	2	0	0	2	0	0	2
Bayelsa	Yenagoa	Obunagha	MG	1	0	1	1	0	1	1	0	1
Bayelsa	Yenagoa	Famgbe	MG	1	0	1	1	0	1	1	0	1
Bayelsa	Yenagoa	Otuan	MG	0	0	3	0	0	3	0	0	3
Bayelsa	KolokumaOpokuma	Ayakoroma	MG	0	1	0	0	1	0	0	1	0
Bayelsa	Ogbia	Elebele	MPC	1	3	1	1	3	1	1	3	1
Bayelsa	Sagbama	Sagbama	MPC	1	0	5	1	0	5	1	0	5
Bayelsa	Yenagoa	Nedugo-Agbia	MPC	1	1	1	1	1	1	1	1	1
Bayelsa	Yenagoa	Obogoro	MPC	1	0	1	1	0	1	1	0	1
Bayelsa	Ogbia	Anyama	MPC	0	0	1	0	0	1	0	0	1
Bayelsa	Brass	Brass	MPC	1	0	0	1	0	0	1	0	0
Bayelsa	Nembe	Alagoa-Tereke	MPC	0	0	2	0	0	2	0	0	2
Bayelsa	Yenagoa	Azikoro	MPC	0	0	2	0	0	2	0	0	2
Bayelsa	Sagbama	Elemebiri	MPC	0	0	1	0	0	1	0	0	1
Bayelsa	Ogbia	Otuokpoti	MPC	0	1	2	0	1	2	0	1	2
Bayelsa	Yenagoa	Biseni	MPC	0	0	2	0	0	2	0	0	2
Bayelsa	Yenagoa	Yenegwe	MPC	0	0	4	1	0	4	1	0	4
Bayelsa	Yenagoa	Yenaka	MPC	0	0	3	0	0	3	0	0	3
Bayelsa	Southern Ijaw	Okubie	MPC	1	2	2	1	2	2	1	2	2
Bayelsa	KolokumaOpokuma	Odi	MPC	0	0	2	0	0	2	0	0	2
Bayelsa	Sagbama	Tungbo	MPC	0	3	2	0	3	2	0	3	2
Edo	Ikpoba-Okha	Igboekpen	AC	3	1	0	3	1	0	3	1	0
Edo	Orhionmwon	Ikobi Village	AC	1	0	0	1	0	0	1	0	0
Edo	Orhionmnmwon	Ugo Village	AC	1	0	3	1	0	3	1	0	3
Edo	Ovia South	Ekiador	AC	3	0	0	3	0	0	3	0	0
Edo	Evbonogbon Camp 34 community(NCF)		AC	0	5	0	0	5	0	0	5	0
Edo	Umoghun-Zuagbor		AC	0	5	0	0	5	0	0	5	0
Edo	Ughoton community(NCF)		AC	0	5	0	0	5	0	0	5	0

Edo	Ekewan community(NCF)		AC	0	5	0	0	5	0	0	5	0
Edo	Owan-East	Evbiamen	AC	2	1	0	2	1	0	2	1	0
Edo	Etsako-East		AC	2	0	0	2	0	0	2	0	0
Edo	Etsako central		AC	3	2	0	3	2	0	3	2	0
Edo	Esan South-East		AC	1	0	0	1	0	0	1	0	0
Edo	Esan South-East		AC	1	2	0	1	2	0	1	2	0
Edo	Igueben		AC	2	3	0	2	3	0	2	3	0
Edo	Egor		AC	2	0	0	2	0	0	2	0	0
Edo	Oredo		AC	2	1	0	2	1	0	2	1	0
Edo	ESAN WST	WARRAKE	MPC	2	0	0	2	0	0	2	0	0
Edo	Ikpoba-Okha	Oghoghobi	MPC	6	5	11	6	5	11	6	5	13
Edo	Etsako Central	Fugar	MPC	2	0	4	2	0	4	2	0	4
Edo	Orhiomwon	Iguelaba	MPC	6	4	9	6	4	9	6	4	9
Edo	Esan West	Ekpoma	MPC	0	0	0	0	0	0	1	3	0
Edo	Ikpoba-Okha	Benin-City	MPC	5	2	2	5	2	2	5	2	2
Edo	Ovia South	Ofunwengbe Village	MG	0	1	0	0	1	0	0	1	0
Edo	Etsako West	Iyanmo Village	MG	2	0	0	2	0	0	2	0	0
Edo	Etsako West	Igbei Village	MG	1	0	0	1	0	0	1	0	0
Edo	Etsako West	Iddato Village	MG	1	1	0	2	0	0	2	0	0
Edo	Owan East	Ebuleken-Ivbiaro	MG	1	1	0	1	1	0	1	1	0
Edo	Owan East	Ogute Village	MG	1	1	0	1	1	0	1	1	0
Edo	Etsako West	Nsegu Village	MG	3	0	0	3	0	0	3	0	0
Edo	Etsako West	Aviele Village	MG	2	0	0	2	0	0	2	0	0
Edo	Ughoton community(NCF)		MG	3	2	0	3	2	0	3	2	0
Edo	Ekewan community(NCF)		MG	3	2	0	3	2	0	3	2	0
Edo	Evbonogbon Camp 34 community(NCF)		MG	1	4	0	1	4	0	1	4	0
Edo	Ogba community (NCF)		MG	5	0	0	5	0	0	5	0	0
Edo	Obaszagbon-Nugu		MG	0	5	0	0	5	0	0	5	0
Edo	Umoghun-Zuagbor		MG	4	1	0	4	1	0	4	1	0
Edo	IKPOBA OKHA	Vessa Cassava International Ltd.	SME	101	99	200	101	99	220	101	99	220
Delta	Okpe	Okpe	AC	1	1	0	1	1	0	1	1	0
Delta	Ughelli North	Ughelli North	AC	1	1	0	1	1	0	1	1	0
Delta	Isoko North	Isoko North	AC	1	1	0	1	1	0	1	1	0
Delta	Ughelli South	Ughelli South	AC	2	1	0	2	1	0	2	1	0
Delta	Ndokwa West	Ndokwa West	AC	1	0	0	1	0	0	1	0	0
Delta	Oshimili South	Oshimili South	AC	1	0	0	1	0	0	1	0	0
Delta	Oshimili South	Oshimili South	AC	1	0	0	1	0	0	1	0	0
Delta	Ughelli North	Ughelli North	AC	0	1	0	0	1	0	0	1	0
Delta	Ethiope West	Ethiope West	AC	1	1	0	1	1	0	1	1	0
Delta	Ughelli South	Ughelli South	AC	4	11	0	4	11	0	4	13	0
Delta	Okpe	Okpe	AC	1	0	0	1	0	0	1	0	0
Delta	Isoko North	Isoko North	MG	1	0	0	1	0	0	1	0	0
Delta	Ndokwa west	Ndokwa west	MG	1	0	0	1	0	0	1	0	0
Delta	Aniocha North	Aniocha North	MG	1	0	0	1	0	0	1	0	0
Delta	Oshimili South	Oshimili South	MG	0	1	0	0	1	0	0	1	0
Delta	Ughelli North LGA	Ughelli North LGA	MG	2	1	0	2	1	0	2	1	0
Delta	Aniocha North	Aniocha North	MG	1	0	0	1	0	0	1	0	0
Delta	Aniocha South	Aniocha South	MG	2	0	0	2	0	0	2	0	0
Delta	Patani	Patani	MG	1	0	0	1	0	0	1	0	0
Delta	Isoko North	Isoko North	MG	2	0	0	2	0	0	2	0	0
Delta	Isoko South	Isoko South	MG	0	2	0	0	2	0	0	2	0
Delta	Isoko South	Isoko South	MG	1	0	0	1	0	0	1	0	0
Delta	Ughelli North	Ughelli North	MG	2	0	0	2	0	0	2	0	0
Delta	Oshimili North	Oshimili North	MG	0	1	0	0	1	0	0	1	0

Delta	Isoko South	Isoko South	MG	1	0	0	1	0	0	1	0	0
Delta	Isoko North	Isoko North	MPC	1	1	0	1	1	0	1	1	0
Delta	Bomadi	Bomadi	MPC	0	0	0	0	0	0	1	1	0
Delta	Isoko North	Isoko North	MPC	2	0	0	2	0	0	2	0	0
Delta	Isoko North	Isoko North	MPC	1	1	0	1	1	0	1	1	0
Delta	Sapele	Sapele	MPC	2	1	0	2	1	0	2	1	0
Delta	Ethiope East	Ethiope East	MPC	1	1	0	1	1	0	1	1	0
Delta	Ughelli North	Ughelli North	MPC	2	0	0	2	0	0	2	0	0
Delta	Ethiope West	Ethiope West	MPC	1	0	0	1	0	0	1	0	0
Delta	Oshimili South	Oshimili South	MPC	4	12	6	4	12	6	4	12	6
Delta	Ethiop East	Ethiop East	MPC	4	8	0	4	8	0	4	8	0
Delta	Sapele	Sapele	SME	6	0	0	6	0	0	6	0	0
C'River	Biase	Aparavuni	MG	2	1	0	3	0	0	2	1	0
C'River	Yakurr	Ugep	MG	3	0	0	2	1	0	3	0	0
C'River	Abi	Agbara	MG	2	1	0	3	0	0	3	0	0
C'River	Abi	Anong	MG	2	1	0	2	1	0	2	1	0
C'River	Abi	Itigidi	MG	2	1	0	2	1	0	2	1	0
C'River	Abi	Ekureku	MG	2	1	0	2	1	0	2	1	0
C'River	Odukpani	Okoyong	MG	2	1	0	2	1	0	2	1	0
C'River	Akamkpa	Oban	MG	2	1	0	2	1	0	2	1	0
C'River	Ogoja	Mbube	MG	2	1	0	2	1	0	2	1	0
C'River	Obubra	Iyamoyong	MPC	2	0	0	2	0	0	2	0	0
C'River	Bekwara	Ukpah	MPC	2	2	0	2	2	0	2	2	0
C'River	Boki	Bamba	MPC	2	1	0	2	1	0	2	1	0
C'River	Boki	Kanyang	MPC	2	0	0	2	0	0	2	0	0
C'River	Odukpani	Okurikang	MPC	3	0	0	3	0	0	3	0	0
C'River	Ikom	Okuni	MPC	3	0	0	3	0	0	3	0	0
C'River	Akpabuyo		MPC	2	0	0	2	0	0	2	0	0
C'River	Boki	Ebbaken-Boje	MPC	2	1	0	2	1	0	2	1	0
C'River	-		MPC	2	0	0	2	0	0	2	0	0
C'River	Yakurr	Ugep	MPC	2	0	0	2	0	0	2	0	0
C'River	Biase	Ehom	MPC	2	1	0	2	1	0	2	1	0
C'River	Calabar FTZ	Obubra	SME	11	2	0	11	3	0	11	9	0
C'River	Obanliku	Beebi	SME	7	11	0	7	14	0	7	18	0
C'River	Yala	Ijegu	SME	9	16	0	9	11	0	9	12	0
C'River	Yala		SME	5	3	0	5	3	0	5	3	0
River	Eleme	Eleme	AC	1	0	0	0	0	0	0	0	0
River	Eleme	Eleme	AC	1	1	0	1	1	0	1	1	2
River			AC	1	0	0	1	0	0	1	0	0
River	Ahoda East	Ahoda East	MG	1	0	0	1	0	0	1	0	0
River	Gokana	Gokana	MG	1	0	0	2	1	0	0	0	0
River	Eleme	Eleme	MG	1	0	0	1	0	0	0	0	0
River	Kaani 1 KHALGA	Kaani 1 KHALGA	MG	0	0	0	0	0	0	2	2	4
River	Borobara Tai	Borobara Tai	MG	1	1	0	1	1	0	1	0	2
River	K-Dere	K-Dere	MG	1	0	0	1	0	0	1	0	0
River	Eleme	Eleme	MG	2	0	0	2	0	0	2	0	0
River	Etche	Etche	MG	2	0	0	2	0	0	2	0	0
River	Ikwerre	Ikwerre	MPC	1	0	0	1	0	0	1	0	0
River	Omuma	Omuma	MG	1	3	0	1	3	0	1	3	0
River	Ahoda	Ahoda	SME	6	4	0	6	4	0	6	4	4

Appendix III

Number of clients patronising the Enterprises

State	LGA	Community	Status	No of Clients		
				July	August	September
Abia	Ikwano	Ariam-Alala	MG	64	103	85
Abia	Isiala Ngwa S	Mgbokonta	MG	14	13	0
Abia	Obingwa	Ossa-Ukwu	MG	49	41	29
Abia	Obingwa	Owo Ahia-afor	MG	18	215	16
Abia	Umunneochi	Obinolu, Ngodo	MG	9	12	5
Abia	Isiala Ngwa South	Amairi, Umuoba	MG	76	121	102
Abia	Isiukwuato	Umudiya, Amaeke Ovim	MG	27	26	8
Abia	Umunneochi	Umumeze Amuda, Isuochi	MG	221	161	
Abia	Bende	Ikot Ugo-Okopedi, Itumbazo	MG	48	123	59
Abia	Ohafia	Amaekpu	MG	23	46	
Abia	Umuahia South	Ogbodiukwu, Umuahia	MG	29	43	30
Abia	Umuahia North	Uhabiri Ossah	MPC	6	28	
Abia	Umuahia South	Umuabali	MPC	24	18	
Abia	Osioma	Osioma	MPC	410	336	152
Abia	Umuahia South	Ohiya	MPC	99	117	23
Abia	Umuahia North	Umukabia Umuagbom	MPC	398	367	454
Abia	Umuahia South	Umuobutu, Old Umuahia	MPC	323	262	108
Abia	Ikwano	Nchara-Oloko	MPC	219	211	219
Abia	Ohafia	Amurie, Nkporo, O	MPC	55	51	37
Abia	Bende	Okafia	MPC	393	414	589
Abia	Umuahia North	Azueke Ndume	MPC	17	22	45
Abia	Obingwa	Owo Ahia-afor	MPC	6	6	70
Abia	Umuahia South	Old Umuahia	SME	196	204	0
Abia	Arochukwu	Achara-Ihechiowa	SME	132	132	127
Abia	Umuahia North	Umuahia	SME	18	15	8
Anambra	Ihiala	Okohia-Ihiala	MPC	31	16	6
Anambra	Orumba North	Umunze	MPC	0	276	0
Anambra	Orumba South	Norfijia-Umuawayi-Umueji	MPC	0	177	197
Anambra	Idemili	Obosi	MPC	96	102	0
Anambra	Oyi	Umuefi-Eziagu, Nteje	MPC	0	0	17
Anambra	Ihiala	Umuhu-Okija	MPC	2	2	2
Ebonyi	Ngbo West	Umuogudu Akpu	MG	20	15	0
Ebonyi	Ngbo West	Egwegwo	MG	20	0	0
Enugu	Uzo-uwani	Adani	IC	110	0	0
Enugu	Oji River	Agbaleinyi	MG	248	331	155
Enugu	Nsukka	Obimo	MPC	21	5	1
Enugu	Enugu North	Akpuoga Nike	MPC	64	114	88
Enugu	Uzo-uwani	Adani	SME	64	4	2
Imo	Ideato South	Umuofeke, Okohia	MPC	14	13	3
Imo	ORSU	Ubahaeze, Awo-Idemili	MPC	19	0	0
Bayelsa	Ogbia	Yiba-ama	AC	76	127	96
Bayelsa	Ogbia	Otuasega	AC	141	201	104
Bayelsa	Ogbia	Emeyal 11	AC	57	66	39
Bayelsa	Yenagoa	Ogu	AC	43	65	48
Bayelsa	Sagbama	Isoni	AC	76	185	117
Bayelsa	Sagbama	Ebedebiri	AC	53	94	79
Bayelsa	Sagbama	Toru-orua	AC	45	102	61
Bayelsa	Kolokuma/Opokuma	Orubiri	AC	55	127	98
Bayelsa	Southern Ijaw	Azama	AC	197	200	153
Bayelsa	Southern Ijaw	Oporoma	AC	54	97	67
Bayelsa	Sagbama	Ossiama	AC	121	204	153
Bayelsa	Sagbama	Akkeddei	AC	109	198	130

Bayelsa	Yenagoa	Agudama	AC	67	59	51
Bayelsa	Southern Ijaw	Olugbobiri	MG	87	129	45
Bayelsa	Southern Ijaw	Kassama	MG	120	235	134
Bayelsa	Southern Ijaw	Igeibiri	MG	67	143	187
Bayelsa	Southern Ijaw	Amassoma	MG	54	87	67
Bayelsa	Sagbama	Egbopuloama	MG	198	211	112
Bayelsa	Sagbama	Odoni	MG	65	98	64
Bayelsa	Yenagoa	Akaba	MG	43	76	54
Bayelsa	Yenagoa	Yenaka	MG	37	81	43
Bayelsa	Yenagoa	Bumoundi-g	MG	76	105	87
Bayelsa	Yenagoa	Ikibiri	MG	78	131	83
Bayelsa	Ogbia	Epebu	MG	62	87	79
Bayelsa	Southern Ijaw	Ikebiri	MG	55	67	57
Bayelsa	Southern Ijaw	ukubie	MG	34	48	28
Bayelsa	Southern Ijaw	Angiama	MG	91	102	57
Bayelsa	Southern Ijaw	Emete	MG	52	91	80
Bayelsa	Southern Ijaw	Ekowe	MG	55	64	70
Bayelsa	Yenagoa	Obunagha	MG	67	91	85
Bayelsa	Yenagoa	Famgbe	MG	56	69	49
Bayelsa	Southern Ijaw	Otuan	MG	155	172	102
Bayelsa	Kolokuma/Opokuma	Ayakoroma	MG	61	121	110
Bayelsa	Ogbia	Elebele	MPC	234	288	187
Bayelsa	Sagbama	Sagbama	MPC	176	169	106
Bayelsa	Yenagoa	Nedugo-Agbia	MPC	45	54	22
Bayelsa	Yenagoa	Obogoro	MPC	98	108	45
Bayelsa	Ogbia	Anyama	MPC	55	86	47
Bayelsa	Nembe	Alagoa-Tereke	MPC	33	39	19
Bayelsa	Yenagoa	Azikoro	MPC	66	63	45
Bayelsa	Sagbama	Elemebiri	MPC	98	124	64
Bayelsa	Yenagoa	Biseni	MPC	68	97	59
Bayelsa	Yenagoa	Yenaka	MPC	97	131	64
Bayelsa	Southern Ijaw	Okubie	MPC	41	48	32

Appendix IV

Groups/Farmers, Farm size and Quantity of Cassava Stems Sold

State	LGA	Community	Name of Farm/Farmer/Group	Farm size(ha)	Qty of stems sold
Anambra	Ihiala	Umuhu-Okija	Jubilee Nnewi Farmers Multipurpose Coop. Soc. Ltd.	35	350
Anambra	Orumba South	Norfijia-Umuawayi-Umueji	Mr. Ernest Ikechukwu Nwabuike (08034244230)	9	125
Anambra	Ihiala	Okohia-Ihiala	Immaculate CWO Okohia-Ihiala-(Rev.F. Cletus)	43.5	410
Ebonyi	Edda East	Owutu	Cassava Initiatives for Rural Women & youths/Ngozi Okorie (08080271678)	7.5	420
Ebonyi	Ezzamgbo	Amike-Izhia	Friendship Multipurpose Coop. Soc./Alhaji Bello Amadi(08037717653)	6	125
Enugu	Uzo-uwani	Adani	The Ezienyi Farmer's Multi-purpose Coop Society Ltd	25	155
Enugu	Nsukka	Okutu	Okutu Multi-purpose Farmer's Coop Union	25	230
Enugu	Enugu East	Alulu Nike-Uno	Judoan Umunne Elite Farmers	20	320
Enugu	Uzo-Uwani	Adani	Ugomentus	35	400
Bayelsa	Sagbama	Egbopuloama	Greater Evangelism Worlq Crusade Farmers coop.	4.5	55
Bayelsa	Sagbama	Sagbama	The Adausi group (Sagbama) farmers	41	120

			cooperative society Ltd		
Bayelsa	Yenagoa	Nedugo-Agbia	Kemebigha farmers coop. society Ltd	5.3	60
Bayelsa	Yenagoa	Obogoro	Ogbo-esuevie casava farmers association	4	85
Bayelsa	Ogbia	Anyama	Anyama farmers coop.society Ltd	6.8	70
Bayelsa	Brass	Brass	Brass farmers coop.society Ltd	4.1	40
			Pada farmers multipurpose coop. society Ltd		
Bayelsa	Nembe	Alagoa-Tereke		3.5	50
Bayelsa	Yenagoa	Azikoro	Ovievie farmers coop. society ltd	3.5	25
Bayelsa	Sagbama	Elemebiri	Ebiakpo farmers coop.society Ltd	4	35
			Cassava crop devt(Otuokpoti) farmers coop.soc.Ltd		
Bayelsa	Ogbia	Otuokpoti		4	40
Bayelsa	Yenagoa	Yenegwe	KGA Agro services company ltd	3.5	40
Bayelsa	Sagbama	Ossiamama	Aladei Multi purpose Coop.	2.8	20
Delta	Isoko North	Ozoro	Happy Ladies multipurpose Coop Soc.	15	360
Delta	Isoko North	Otor-Iyede	Ewoma Iyede Women's Farmers Coop. Soc	35	250
			Drena Farms*		
Delta	North	Edjekota		15	300
			Aniogor-ejeme		
Delta	Oshimili				
Delta	South		John Tudy Farms	35	180

Appendix V

Students of Obasuyi College – Delta State Trained on Product Development JULY 3, 2008

S/N	NAME	GENDER
1	Sedi Alasa	M
2	Osaghae ayo	M
3	Mathew ukpe	M
4	P.O Itua	F
5	I.O Legogie	M
6	Veronica Onomute	F
7	Charles Legogie	M
8	Deacon ojo	M
9	Godspower Akpoirere	M
10	F.O Ojeaga	F
11	C.O Ejanorhaze	M
12	R.Obakpolor	M
13	M. okosun	F
14	Gladys Atikui	F
15	Vero Ukpamen	F
16	Gloria Aghimah	F
17	Chairty Eboigbe	F
18	Bnenda Abdulahi	F
19	Rakoczi Etchie D	M
20	Obediah Aron	M
21	Sunday Anetor	M
22	Emillie Anetor	F
23	Ogu Sunday	M
24	Jim Owei	M
25	S.E Ogbeide	M

26	George Ojugbeli	M
27	R.Akpofurere	F
28	John Osagie	M
29	Williams Ejedegba	M
30	Micheal E. Ojo	M
31	Nosa Obanor	M
32	Patience OKOSUN	F
33	2nd Comm.& Student	M
34	Pa Nagbonma	M
35	Patrick Odighi	M
36	Nicholas Idahosa	M
37	Francis Alonge	M
38	B. Odighi	F
39	Vic Ogbawe	F
40	Dorw onogieru	F
41	Grace Odighi	F
42	Blessing Osaru	F
43	Joy Osagiede	F
44	Iroghama okoyom	F
45	Isreall Obuseh	M
46	Chucks Odiqwe	M
47	Comfort Enogieru	F
48	Monday Obianugba	M
49	Monday Augustine	M
50	Joy Ayomonica	F
51	Faith Taire	F
52	Franklyn Obi	M
53	Ijeomah Doris	F
54	Helen Agbonam	F
55	Omor Okojie	F
56	Okonkwo Hyginus	M
57	Glory Agbenro	F
58	Helen Sirumi	F
59	Joy Emmanuel	M
60	Ngozi Chimsonu	F
61	Osifo Lawrence	M
62	Igba Louis	M
63	Chibuzor Kingsly	M
64	Osaretin Odighi	M
65	Chibuzor Isioma	F
66	Osare Goodluck	M
67	Osazuwa Osametin	M
68	Otuwho Joy	F
69	Nwose Franca	F
70	Oseretin Nelson	M
71	Igiede Osayade	M

Appendix VI

Umuahia Women FBO Trained by Mrs. Ihueze on Product Development 10 August, 2008

S/No	Name of participant	Gender	Location
1	Grace Meribe	F	Umuahia South LGA
2	Mrs Evelyn E. Ezeria	F	Umuahia South LGA
3	Mrs Ednah Ogbonna	F	Umuahia South LGA
4	Lady Dorothy Nwala	F	Umuahia South LGA
5	Comfort Sampson	F	Umuahia South LGA
6	E. Ekenta	F	Umuahia South LGA
7	Faith Kamalu	F	Umuahia South LGA
8	Blessing Nwogu	F	Umuahia South LGA
9	Amaechi Okere	F	Umuahia South LGA
10	Uluma Onwubido	F	Umuahia South LGA
11	Udealisi Udoka	F	Umuahia South LGA
12	Mercy Okoronkwo	F	Umuahia South LGA
13	Marcilliana Umezumuke	F	Umuahia South LGA